

**CHAVES COUNTY BOARD OF COMMISSIONERS
REGULAR BUSINESS MEETING AGENDA**

December 17, 2020 –9:00 a.m.

**Chaves County Administrative Center – Joseph R. Skeen Building
Commission Chambers - #1 St. Mary's Place**

CALL TO ORDER

PLEDGE OF ALLEGIANCE

DETERMINATION OF QUORUM

APPROVAL OF MINUTES

PROCLAMATIONS: Ron Lethgo Day, Dave Kunko Day, Robert Corn Day & Stan Riggs Day

AGENDA ITEMS

A. PUBLIC HEARINGS

1. Ordinance O-107 an Ordinance of Chaves County Relating to Collective Bargaining for the County of Chaves, NM, Providing Rights, Responsibilities, and Conditions of Continued Existence and Transfer of Authority Upon Termination of Local Board

B. AGREEMENTS AND RESOLUTIONS

2. Resolution R-20-043 Approval of Temporary Transfer
3. Resolution R-20-044 Reinstatement of Meat Inspection Program in New Mexico

C. OTHER BUSINESS

4. Courthouse Security Upgrade Project
5. Permission to Publish for a Public Hearing Regarding Potential Low-Income Tax Rebate Ordinance
6. 2021 Chaves County Annual Road Hearing Schedule
7. Waive Road Cut Fee for Berrendo Cooperative Water Users Association, INC

APPROVAL OF CHECKS

APPROVAL OF REPORTS

**UNSCHEDULED COMMUNICATIONS LIMITED TO THREE MINUTES PER
VISITOR, AND SHALL NOT EXCEED A TOTAL OF 15 MINUTES
NO FORMAL ACTION TAKEN BY COMMISSION**

- **COUNTY MANAGERS' COMMUNICATIONS**
- **COMMISSIONER'S COMMUNICATIONS**
- **SIGNATURE OF DOCUMENTS**
- **ADJOURNMENT**

If you are an individual with a disability who needs a reader, qualified sign language interpreter, or any form of auxiliary aid or service to attend or participate in the hearing of a meeting, please contact the County Commissioner's office at 575-624-6600. This should be done at least one week prior to the meeting. Public documents, including the agenda and minutes, can be provided in various accessible formats. Please contact the County Commissioner's office if a summary or other type of accessible format is needed.

AGENDA ITEM: 1

Ordinance No. O-107 an Ordinance of Chaves County Relating to Collective Bargaining for the County of Chaves, NM, Providing Rights, Responsibilities, and Conditions of Continued Existence and Transfer of Authority Upon Termination of Local Board

MEETING DATE: December 17, 2020

STAFF SUMMARY REPORT

ACTION REQUESTED BY: Stanton L. Riggs, County Manager

ACTION REQUESTED: Approve Ordinance

ITEM SUMMARY:

Staff is requesting approval of Ordinance O-107. This proposed ordinance has been approved by the State Labor Board. This new ordinance will allow us to maintain the local county board.

Staff recommends approval.

SUPPORT DOCUMENTS: Ordinance No. O-107

SUMMARY BY: Stanton L. Riggs

TITLE: County Manager

CHAVES COUNTY, NEW MEXICO
BOARD OF COUNTY COMMISSIONERS
ORDINANCE NO. O-107

RELATING TO COLLECTIVE BARGAINING FOR THE COUNTY OF CHAVES,
NEW MEXICO, PROVIDING RIGHTS, RESPONSIBILITIES,
AND CONDITIONS OF CONTINUED EXISTENCE AND TRANSFER OF
AUTHORITY UPON TERMINATION OF LOCAL BOARD.

BE IT ENACTED BY THE COUNTY OF CHAVES:

SECTION 1. SHORT TITLE. This Ordinance may be cited as the “County of Chaves Labor Management Relations Ordinance.”

SECTION 2. PURPOSE. The purpose of the Labor Management Relations Ordinance is to guarantee employees the right to organize and bargain collectively with their employer, to protect the rights of the employer and the employees and to promote harmonious and cooperative relationships between the employer and the employees; and to acknowledge the obligation of the employer and the employees to provide orderly and uninterrupted services to the citizens.

SECTION 3. CONFLICTS. In the event of conflict with other County of Chaves Ordinances, the provisions of the County of Chaves Labor Management Relations Ordinance shall supersede other previously enacted ordinances. County of Chaves sanctioned rules and regulations, administrative directives, departmental rules and regulations, and workplace practices shall control unless there is a conflict with a collective bargaining agreement. Where a conflict exists, the collective bargaining agreement shall control.

SECTION 4. DEFINITIONS. As used in the Labor Management Relations Ordinance:

- A. “appropriate bargaining unit” means a group of employees designated by the County of Chaves Board for the purpose of collective bargaining;
- B. “appropriate governing body” means the policymaking body or individual representing a public employer;

- C. “authorization card” means a signed affirmation by a member of an appropriate bargaining unit designating a particular organization as exclusive representative;
- D. “Board” means the County of Chaves Labor Management Relations Board;
- E. “certification” means the designation by the board of a labor organization as the exclusive representative for all public employees in an appropriate bargaining unit;
- F. “collective bargaining” means the act of negotiating between a public employer and an exclusive representative for the purpose of entering into a written agreement regarding wages, hours and other terms and conditions of employment;
- G. “confidential employee” means a person who devotes a majority of the person’s time to assisting and acting in a confidential capacity with respect to a person who formulates, determines and effectuates management policies;
- H. “emergency” means a one-time crisis that was unforeseen and unavoidable;
- I. “exclusive representative” means a labor organization that, as a result of certification, has the right to represent all public employees in an appropriate bargaining unit for the purposes of collective bargaining;
- J. “impasse” means failure of a public employer and an exclusive representative, after good-faith bargaining, to reach agreement in the course of negotiating a collective bargaining agreement;
- K. “labor organization” means an employee organization, one of whose purposes is the representation of public employees in collective bargaining and in otherwise meeting, consulting and conferring with employers on matters pertaining to employment relations;
- L. “lockout” means an act by the employer to prevent its employees from going to work for the purpose of resisting demands of the employees' exclusive representative or for the purpose of gaining a concession from the exclusive representative;

M. “management employee” means an employee who is engaged primarily in executive and management functions and is charged with the responsibility of developing, administering or effectuating management policies. An employee shall not be deemed a management employee solely because the employee participates in cooperative decision-making programs or whose fiscal responsibilities are routine, incidental or clerical;

N. “mediation” means assistance by an impartial third party to resolve an impasse between a public employer and an exclusive representative regarding employment relations through interpretation, suggestion and advice;

O. “professional employee” means an employee whose work is predominantly intellectual and varied in character and whose work involves the consistent exercise of discretion and judgment in its performance and requires knowledge of an advanced nature in a field of learning customarily requiring specialized study at an institution of higher education or its equivalent. The work of a professional employee is of such character that the output or result accomplished cannot be standardized in relation to a given period of time;

P. “public employee” means a regular non-probationary employee of the County of Chaves; and includes those employees whose work is funded in whole or in part by grants or other third-party sources;

Q. “public employer” means the County of Chaves;

R. “strike” means a public employee’s refusal, in concerted action with other public employees, to report for duty or the willful absence in whole or in part from the full, faithful and proper performance of the duties of employment for the purpose of inducing, influencing or coercing a change in the conditions, compensation, rights, privileges or obligations of public employment; and

S. “supervisor” means an employee who devotes a majority of work time to supervisory duties, who customarily and regularly directs the work of two or more other employees and who has the authority in the interest of the employer to hire, promote or discipline other employees or to recommend such actions effectively, but “supervisor” does not include an individual who performs merely routine, incidental or clerical duties or who occasionally assumes a supervisory or directory role or whose duties are substantially similar to those of the individual’s subordinates and does not include a lead employee or an employee who participates in peer review or occasional employee evaluation programs.

SECTION 5. RIGHTS OF EMPLOYEES.

A. Employees, other than management, supervisory, confidential, and probationary employees, may form, join, or assist any labor organization for the purpose of collective bargaining through a representative chosen by the employees without interference, restraint, or coercion. Employees also have the right to refuse to form, join, or assist any labor organization.

B. Public employees have the right to engage in other concerted activities for mutual aid or benefit. This right shall not be construed as modifying the prohibition on strikes set forth in Section 18 of this ordinance.

SECTION 6. RIGHTS OF EMPLOYER. Unless limited by the provisions of a collective bargaining agreement or by other statutory provision, the employer may:

A. Direct the work of, hire, promote, assign, transfer, demote, suspend, discharge, or terminate public employees;

B. Determine qualifications for employment and the nature and content of personnel examinations;

C. Take actions as may be necessary to carry out the mission of the employer in emergencies,

and;

D. Retain all rights not specifically limited by a collective bargaining agreement or by the Public Employee Bargaining Act.

SECTION 7. LABOR MANAGEMENT RELATIONS BOARD – CONDITIONS OF CONTINUED EXISTENCE AND TRANSFER OF AUTHORITY UPON TERMINATION.

A. The Labor-Management Relations Board created on October 13, 2003, pursuant to Ordinance number O-070 shall continue to exist except as provided in NMSA 1978 Section 10-7E-10(B) through 10-7E-10(J) (2020).

B. The Board shall be composed of three members appointed by the County of Chaves County Commission. One member shall be appointed on the recommendation of individuals representing labor, one member shall be appointed on the recommendation of the County of Chaves County Manager, and one member shall be appointed on the recommendation of the first two appointees.

C. Board members shall serve for a period of one (1) year with terms. Vacancies shall be filled in the same manner as the original appointment and such appointments shall only be made for the remainder of the unexpired term. A Board member may serve an unlimited number of terms.

D. During the term of appointment, no Board member shall hold or seek any other political office or public employment or be an employee of a union, an organization representing public employees or a public employer.

E. Each Board member shall be paid per diem and mileage in accordance with the provisions of the Per Diem and Mileage Act.

SECTION 8. BOARD – POWERS AND DUTIES.

A. The Labor Management Relations Board shall promulgate rules and regulations necessary to accomplish and perform its functions and duties as established in the Labor Management

Relations Ordinance, including the establishment of procedures for:

- 1) the designation of appropriate bargaining units;
- 2) the selection, certification, and decertification of exclusive representatives; and;
- 3) the filing, hearing, and determination of complaints of prohibited practices.

B. The Labor Management Relations Board shall:

- (1) hold hearings and make inquiries necessary to carry out its functions and duties;
- (2) conduct studies on problems pertaining to employee-employer relations;
- (3) request information and data from public employers and labor organizations necessary to carry out its functions and responsibilities; and
- (4) hire personnel or contract with third parties as the appropriate governing body deems necessary to assist the Labor Management Relations Board in carrying out its functions and may delegate any or all of its authority to those third parties, subject to final review of the Labor Management Relations Board.

C. The Labor Management Relations Board may issue subpoenas requiring, upon reasonable notice, the attendance and testimony of witnesses and the production of evidence, including books, records, correspondence, or documents relating to the matter in question. The Labor Management Relations Board may prescribe the form of subpoena, but it shall adhere insofar as practicable to the form used in civil actions in the district court. The Labor Management Relations Board may administer oaths and affirmations, examine witnesses, and receive evidence.

D. The Labor Management Relations Board shall decide issues by majority vote and shall issue its decisions in the form of written orders and opinions.

E. The Labor Management Relations Board has the power to enforce provisions of the Public Employee Bargaining Act and this ordinance through the imposition of appropriate administrative

remedies, actual damages related to dues, back pay including benefits, reinstatement with the same seniority status that the employee would have had but for the violation, declaratory or injunctive relief or provisional remedies, including temporary restraining orders or preliminary injunctions.

No punitive damages or attorney fees may be awarded by the Labor Management Relations Board.

F. No rule or regulation promulgated by the Labor Management Relations Board shall require, directly or indirectly, as a condition of continuous employment, any employee covered by the Labor Management Relations Ordinance to pay money to any labor organization that is certified as an exclusive representative.

SECTION 9. HEARING PROCEDURES.

A. The Labor Management Relations Board may hold hearings for the purposes of:

- 1) Information gathering and inquiry;
- 2) Adopting rules and;
- 3) Adjudicating disputes and enforcing the provisions of the Labor Management Relations Ordinance and rules adopted pursuant to the Ordinance.

B. The Board shall adopt rules setting forth procedures to be followed during hearings of the Board. Such rules shall meet minimal due process requirements of the state and federal constitutions.

C. The Labor Management Relations Board may appoint a hearing examiner to conduct any adjudicatory hearing authorized by Labor Management Relations Board. At the conclusion of the hearing, the examiner shall prepare a written report, including findings and recommendations, all of which shall be submitted to the Labor Management Relations Board for its decision.

D. A rule proposed to be adopted by the Labor Management Relations Board that affects a

person or governmental entity outside of the Labor Management Relations Board and its staff shall not be adopted, amended or repealed without public hearing and comment on the proposed action before the Labor Management Relations Board. The public hearing shall be held after notice of the subject matter of the rule, the action proposed to be taken, the time and place of the hearing, the manner in which interested persons may present their views and the method by which copies of the proposed rule, proposed amendment or repeal of an existing rule may be obtained. All meetings shall be held in Chaves County. Notice shall be published once at least thirty (30) days prior to the hearing date in a newspaper of general circulation in Chaves County and notice shall be mailed at least thirty (30) days prior to the hearing date to all persons who have made a written request for advance notice of hearings.

E. All adopted rules shall be filed in accordance with applicable state statutes.

F. A verbatim record made by electronic or other suitable means shall be made of every rulemaking and adjudicatory hearing. The record shall not be transcribed unless required for judicial review or unless ordered by the board or local board.

SECTION 10. APPROPRIATE BARGAINING UNITS.

A. The Labor Management Relations Board shall, upon receipt of a petition for a representation election filed by a labor organization, designate the appropriate bargaining unit. Appropriate bargaining units shall be established on the basis of occupational groups or a clear and identifiable community of interest in employment terms, employment conditions, and related personnel matters among the employees involved. Occupational groups shall generally be identified as blue collar, secretarial clerical, technical, paraprofessional, professional, corrections, firefighters, and police officers. Department, craft, or trade designations other than as specified

above shall not determine bargaining units. The parties, by mutual agreement and approval of the Board, may further consolidate occupational groups. The essential factors in determining appropriate bargaining units shall include the principles of efficient administration of government, the history of collective bargaining, and the assurance to employees of their rights guaranteed by the Ordinance.

B. If the labor organization and the employer cannot agree on the appropriate bargaining unit within thirty (30) days, the Labor Management Relations Board shall hold a hearing concerning the composition of the bargaining unit. Any agreement as to the appropriate bargaining unit between the employer and the labor organization is subject to the approval of the Labor Management Relations Board.

C. The Labor Management Relations Board shall not include in any appropriate bargaining unit, probationary, supervisory, managerial, or confidential employees.

D. Jobs included within a bargaining unit pursuant to a County of Chaves labor management relations ordinance in effect on January 1, 2020 shall remain in that bargaining unit after enactment of this ordinance unless otherwise removed by the Labor Management Relations Board in accordance with its rules governing unit clarification.

SECTION 11. ELECTIONS.

A. Whenever, in accordance with rules prescribed by the Labor Management Relations Board, a petition is filed by a labor organization containing the signatures of at least thirty percent of the public employees in an appropriate bargaining unit, the board or local board shall conduct a secret ballot representation election to determine whether and by which labor organization the public employees in the appropriate bargaining unit shall be represented. Upon acceptance of a valid petition, the Labor Management Relations Board shall require the County of Chaves to provide

the labor organization within ten business days the names, job titles, work locations, home addresses, personal email addresses and home or cellular telephone numbers of any public employee in the proposed bargaining unit. This information shall be kept confidential by the labor organization and its employees or officers. The ballot shall contain the name of any labor organization submitting a petition containing signatures of at least thirty percent of the public employees in the appropriate bargaining unit. The ballot shall also contain a provision allowing public employees to indicate whether they do not desire to be represented by a labor organization. An election shall only be valid if forty percent of the eligible employees in the bargaining unit vote in the election.

B. Once a labor organization has filed a valid petition calling for a representation election, other labor organizations may seek to be placed on the ballot. Such an organization shall file a petition containing the signatures of not less than thirty percent of the public employees in the appropriate bargaining unit no later than ten days after the Labor Management Relations Board and the public employer post a written notice that the petition in Subsection A of this section has been filed by a labor organization.

C. As an alternative to the provisions of Subsection A of this section, a labor organization with a reasonable basis for claiming to represent a majority of the employees in an appropriate bargaining unit may submit authorization cards from a majority of the employees in an appropriate bargaining unit to the Labor Management Relations Board, which shall, upon verification that a majority of the employees in the appropriate bargaining unit have signed valid authorization cards, certify the labor organization as the exclusive representative of all public employees in the appropriate bargaining unit. The employer may challenge the verification of the Labor Management Relations Board; the Labor Management Relations Board shall hold a fact-finding

hearing on the challenge to confirm that a majority of the employees in the appropriate bargaining unit have signed valid authorization cards.

D. If a labor organization receives a majority of votes cast, it shall be certified as the exclusive representative of all public employees in the appropriate bargaining unit. Within fifteen days of an election in which no labor organization receives a majority of the votes cast, a runoff election between the two choices receiving the largest number of votes cast shall be conducted. The Labor Management Relations Board shall certify the results of the election, and, when a labor organization receives a majority of the votes cast, the Labor Management Relations Board shall certify the labor organization as the exclusive representative of all public employees in the appropriate bargaining unit.

E. An election shall not be conducted if an election or runoff election has been conducted in the twelve-month period immediately preceding the proposed representation election. An election shall not be held during the term of an existing collective bargaining agreement, except as provided in Section 13 herein.

SECTION 12. EXCLUSIVE REPRESENTATION.

A. A labor organization that has been certified by the Labor Management Relations Board as representing the public employees in the appropriate bargaining unit shall be the exclusive representative of all public employees in the appropriate bargaining unit. The exclusive representative shall act for all public employees in the appropriate bargaining unit and negotiate a collective bargaining agreement covering all public employees in the appropriate bargaining unit. The exclusive representative shall represent the interests of all public employees in the appropriate bargaining unit without discrimination or regard to membership in the labor organization. A claim by a public employee that the exclusive representative has violated this duty of fair representation

shall be forever barred if not brought within six months of the date on which the public employee knew, or reasonably should have known, of the violation.

B. This section does not prevent a public employee, acting individually, from presenting a grievance without the intervention of the exclusive representative. At a hearing on a grievance brought by a public employee individually, the exclusive representative shall be afforded the opportunity to be present and make its views known. An adjustment made shall not be inconsistent with or in violation of the collective bargaining agreement then in effect between the public employer and the exclusive representative.

C. County of Chaves shall provide an exclusive representative of an appropriate bargaining unit reasonable access to employees within the bargaining unit, including the following:

(1) for purposes of newly hired employees in the bargaining unit, reasonable access includes:

(a) the right to meet with new employees, without loss of employee compensation or leave benefits; and

(b) the right to meet with new employees within thirty days from the date of hire for a period of at least thirty minutes but not more than one hundred twenty minutes, during new employee orientation or, if the public employer does not conduct new employee orientations, at individual or group meetings; and;

(2) for purposes of employees in the bargaining unit who are not new employees, reasonable access includes:

(a) the right to meet with employees during the employees' regular work hours at the employees' regular work location to investigate and discuss grievances, workplace-related complaints and other matters relating to employment relations;

and

(b) the right to conduct meetings at the employees' regular work location before or after the employees' regular work hours, during meal periods and during any other break periods.

D. County of Chaves shall permit an exclusive representative to use the public employer's facilities or property, whether owned or leased by the employer, for purposes of conducting meetings with the represented employees in the bargaining unit. An exclusive representative may hold the meetings described in this section at a time and place set by the exclusive representative. The exclusive representative shall have the right to conduct the meetings without undue interference and may establish reasonable rules regarding appropriate conduct for meeting attendees.

E. The meetings described in this section shall not interfere with County of Chaves operations.

F. If County of Chaves has the information in its records, the County of Chaves shall provide to the exclusive representative, in an editable digital file format agreed to by the exclusive representative, the following information for each employee in an appropriate bargaining unit:

- (1) the employee's name and date of hire;
- (2) contact information, including:
 - (a) cellular, home and work telephone numbers;
 - (b) a means of electronic communication, including work and personal electronic mail addresses; and
 - (c) home address or personal mailing address; and;
- (3) employment information, including the employee's job title, salary and work site location.

G. County of Chaves shall provide the information described in Subsection F of this section to the exclusive representative within ten days from the date of hire for newly hired employees in an appropriate bargaining unit, and every one hundred twenty days for employees in the bargaining unit who are not newly hired employees. The information shall be kept confidential by the labor organization and its employees or officers. Apart from the disclosure required by this subsection, and notwithstanding any provision contained in the Inspection of Public Records Act, the public employer shall not disclose the information described in Subsection F of this section, or public employees' dates of birth or social security numbers to a third party.

H. An exclusive representative shall have the right to use the electronic mail systems or other similar communication systems of a public employer to communicate with the employees in the bargaining unit regarding:

- (1) collective bargaining, including the administration of collective bargaining agreements;
- (2) the investigation of grievances or other disputes relating to employment relations;
and
- (3) matters involving the governance or business of the labor organization.

I. Nothing in this section prevents County of Chaves from providing an exclusive representative access to employees within the bargaining unit beyond the reasonable access required under this section or limits any existing right of a labor organization to communicate with public employees.

SECTION 13. DECERTIFICATION OF EXCLUSIVE REPRESENTATIVE.

A. A member of a labor organization or the labor organization itself may initiate decertification of a labor organization as the exclusive representative if thirty percent of the public

employees in the appropriate bargaining unit make a written request to the board for a decertification election. Decertification elections shall be held in a manner prescribed by rule of the board. An election shall only be valid if forty percent of the eligible employees in the bargaining unit vote in the election.

B. When there is a collective bargaining agreement in effect, a request for a decertification election shall be made to the board no earlier than ninety days and no later than sixty days before the expiration of the collective bargaining agreement; provided, however, a request for an election may be filed at any time after the expiration of the third year of a collective bargaining agreement with a term of more than three years.

C. When, within the time period prescribed in Subsection B of this section, a competing labor organization files a petition containing signatures of at least thirty percent of the public employees in the appropriate bargaining unit, a representation election rather than a decertification election shall be conducted.

D. When an exclusive representative has been certified but no collective bargaining agreement is in effect, the board shall not accept a request for a decertification election or an election sought by a competing labor organization earlier than twelve months subsequent to a labor organization's certification as the exclusive representative.

SECTION 14. SCOPE OF BARGAINING.

A. Except for retirement programs provided pursuant to the Public Employees Retirement Act public employers and exclusive representatives:

- (1) shall bargain in good faith on wages, hours and all other terms and conditions of employment and other issues agreed to by the parties. However, neither the public employer nor the exclusive representative shall be required to agree to a proposal or to

make a concession; and

(2) shall enter into written collective bargaining agreements covering employment relations.

B. Entering into a collective bargaining agreement shall not obviate the duty to bargain in good faith during the term of the collective bargaining agreement regarding changes to wages, hours and all other terms and conditions of employment, unless it can be demonstrated that the parties clearly and unmistakably waived the right to bargain regarding those subjects. However, no party may be required, by this provision, to renegotiate the existing terms of collective bargaining agreements already in place.

C. In regard to the Public Employees Retirement Act, County of Chaves in a written collective bargaining agreement may agree to assume any portion of a public employee's contribution obligation to retirement programs provided pursuant to the Public Employees Retirement Act. Such agreements are subject to the limitations set forth in this section.

D. The obligation to bargain collectively shall not be construed as authorizing County of Chaves and an exclusive representative to enter into an agreement that is in conflict with the provisions of any other statute of this state; provided, however, that a collective bargaining agreement that provides greater rights, remedies and procedures to public employees than contained in a state statute shall not be considered to be in conflict with that state statute. In the event of an actual conflict between the provisions of any other statute of this state and an agreement entered into by the public employer and the exclusive representative in collective bargaining, the statutes of this state shall prevail.

E. Payroll deduction of the exclusive representative's membership dues shall be a mandatory subject of bargaining if either party chooses to negotiate the issue. The amount of dues shall be

certified in writing by an official of the labor organization and shall not include special assessments, penalties or fines of any type. County of Chaves shall honor payroll deductions until the authorization is revoked in writing by the public employee in accordance with the negotiated agreement and this subsection and for so long as the labor organization is certified as the exclusive representative. Public employees who have authorized the payroll deduction of dues to a labor organization may revoke that authorization by providing written notice to their labor organization during a window period not to exceed ten days per year for each employee. County of Chaves and the labor organization shall negotiate when the commencement of that period will begin annually for each employee. If no agreement is reached, the period shall be during the ten days following the anniversary date of each employee's employment. Within ten days of receipt of notice from a public employee of revocation of authorization for the payroll deduction of dues, the labor organization shall provide notice to the public employer of a public employee's revocation of that authorization. A public employee's notice of revocation for the payroll deduction of dues shall be effective on the thirtieth day after the notice provided to the public employer by the labor organization. No authorized payroll deduction of dues held by County of Chaves or a labor organization on July 1, 2020 shall be rendered invalid by this provision and shall remain valid until replaced or revoked by the public employee. During the time that a board certification is in effect for a particular appropriate bargaining unit, the public employer shall not deduct dues for any other labor organization.

F. County of Chaves and a labor organization, or their employees or agents, are not liable for, and have a complete defense to, any claims or actions under the law of this state for requiring, deducting, receiving or retaining fair share dues or fees from public employees, and current or former public employees do not have standing to pursue these claims or actions if the fair share

dues or fees were permitted at the time under the laws of this state then in force and paid, through payroll deduction or otherwise, on or before June 27, 2018. This subsection:

- (1) applies to all claims and actions pending on July 1, 2020 and to claims and actions filed on or after July 1, 2020; and
- (2) shall not be interpreted to infer that any relief made unavailable by this section would otherwise be available.

G. An impasse resolution or an agreement provision by County of Chaves and an exclusive representative that requires the expenditure of funds shall be contingent upon the specific appropriation of funds by the appropriate governing body and the availability of funds. An agreement provision by a local school board and an exclusive representative that requires the expenditure of funds shall be contingent upon ratification by the appropriate governing body. An arbitration decision shall not require the re-appropriation of funds.

H. An agreement shall include a grievance procedure to be used for the settlement of disputes pertaining to employment terms and conditions and related personnel matters. The grievance procedure shall provide for a final and binding determination. The final determination shall constitute an arbitration award within the meaning of the Uniform Arbitration Act; such award shall be subject to judicial review pursuant to the standard set forth in the Uniform Arbitration Act. The costs of an arbitration proceeding conducted pursuant to this subsection shall be shared equally by the parties.

I. The following meetings shall be closed:

- (1) meetings for the discussion of bargaining strategy preliminary to collective bargaining negotiations between County of Chaves and the exclusive representative of the public employees of County of Chaves;

- (2) collective bargaining sessions; and
- (3) consultations and impasse resolution procedures at which the public employer and the exclusive representative of the appropriate bargaining unit are present.

SECTION 15. IMPASSE RESOLUTION.

A. The following impasse procedures shall be followed by County of Chaves and exclusive representatives:

- (1) if an impasse occurs, either party may request from the Labor Management Relations Board that a mediator be assigned to the negotiations unless the parties can agree on a mediator. A mediator with the federal mediation and conciliation service shall be assigned by the Labor Management Relations Board to assist negotiations unless the parties agree to another mediator; and
- (2) if the impasse continues after a thirty-day mediation period, either party may request a list of seven arbitrators from the federal mediation and conciliation service. One arbitrator shall be chosen by the parties by alternately striking names from such list. Who strikes first shall be determined by coin toss. The arbitrator shall render a final, binding, written decision resolving unresolved issues pursuant to Section 14 of this Ordinance and the Uniform Arbitration Act no later than thirty days after the arbitrator has been notified of selection by the parties. The arbitrator's decision shall be limited to a selection of one of the two parties' complete, last, best offer. The costs of an arbitrator and the arbitrator's related costs conducted pursuant to this subsection shall be shared equally by the parties. Each party shall be responsible for bearing the cost of presenting its case. The decision shall be subject to judicial review pursuant to the standard set forth in the Uniform Arbitration Act.

B. County of Chaves may enter into a written agreement with the exclusive representative setting forth an alternative impasse resolution procedure.

C. In the event that an impasse continues after the expiration of a contract, the existing contract will continue in full force and effect until it is replaced by a subsequent written agreement. However, this shall not require County of Chaves to increase any employees' levels, steps or grades of compensation contained in the existing contract.

SECTION 16. EMPLOYERS – PROHIBITED PRACTICES.

County of Chaves or its representative shall not:

A. Discriminate against an employee with regard to terms and conditions of employment because of the employee's membership in a labor organization;

B. Interfere with, restrain, or coerce any employee in the exercise of any right guaranteed under the Labor Management Relations Resolution or use public funds to influence the decision of its employees or the employees of its subcontractors regarding whether to support or oppose a labor organization that represents or seeks to represent those employees, or whether to become a member of any labor organization; provided, however, that this subsection does not apply to activities performed or expenses incurred:

(1) addressing a grievance or negotiating or administering a collective bargaining agreement;

(2) allowing a labor organization or its representatives access to County of Chaves facilities or properties;

(3) performing an activity required by federal or state law or by a collective bargaining agreement;

(4) negotiating, entering into or carrying out an agreement with a labor organization;

- (5) paying wages to a represented employee while the employee is performing duties if the payment is permitted under a collective bargaining agreement; or
- (6) representing County of Chaves in a proceeding before the board or a local board or in a judicial review of that proceeding;
- C. Dominate or interfere in the formation, existence or administration of a labor organization;
- D. Discriminate in regard to hiring, tenure or a term or condition of employment in order to encourage or discourage membership in a labor organization;
- E. Discharge or otherwise discriminate against a public employee because the employee has signed or filed an affidavit, petition, grievance or complaint or given information or testimony pursuant to the provisions of this Ordinance or because a public employee is forming, joining or choosing to be represented by a labor organization;
- F. Refuse to bargain collectively in good faith with the exclusive representative;
- G. Refuse or fail to comply with a provision of this Ordinance or board rule;
- H. Refuse or fail to comply with a collective bargaining agreement; or
- I. Negotiate issues which are the subject of negotiations or make any offer, commitment, or promise whatsoever to employees or the exclusive representative, other than through the appointed negotiating team. It is the intent of this language that the integrity of the negotiating process be maintained. All negotiations and concessions shall occur only between the respective appointed negotiating teams.

SECTION 17. EMPLOYEES – LABOR ORGANIZATIONS – PROHIBITED PRACTICES.

- A. An employee, a labor organization, or its representative shall not:
 - 1) Discriminate against an employee with regard to labor organization membership because of race, color, religion, creed, age, disability, sex, or national origin;

- 2) Solicit membership for an employee or labor organization during the employee's duty hours. This does not include the work breaks or lunch periods;
- 3) Restrain or coerce any employee in the exercise of any right guaranteed by the provisions of the Labor Management Relations Ordinance;
- 4) Refuse to bargain collectively in good faith with the employer;
- 5) Refuse or fail to comply with any collective bargaining agreement with the employer. This issue is subject to the required negotiated grievance procedure negotiated by the parties;
- 6) Refuse or fail to comply with any provision of the Labor Management Relations Ordinance;
- 7) Picket homes or private businesses of employees, appointed individuals, or elected officials of County of Chaves;
- 8) Restrain or coerce the employer in the selection of its agent for bargaining; or
- 9) Negotiate issues which are the subject of negotiations or make any offer, commitment, or promise whatsoever to the public employer, other than through the appointed negotiating team. It is the intent of this language that the integrity of the negotiating process be maintained. All negotiations and concessions shall occur only between the respective appointed negotiating teams.

SECTION 18. STRIKES AND LOCKOUTS PROHIBITED.

- A. No employee or labor organization shall engage in a strike. No labor organization shall cause, instigate, encourage, or support a strike. The employer shall not cause, instigate or engage in an employee lockout.
- B. The employer may apply to the district court for injunctive relief to end a strike, and an

exclusive representative of public employees affected by a lockout may apply to the district court for injunctive relief to end a lockout.

C. The Labor Management Relations Board, upon a clear and convincing showing of proof at a hearing that a labor organization directly caused or instigated an employee strike, may impose appropriate penalties on that labor organization, up to and including decertification of the labor organization with respect to any of its bargaining units which struck as a result of such causation or instigation. A strike means an employee's refusal, in concerted action with other employees, to report for duty or his willful absence or withholding of service in whole or in part from the full, faithful, and proper performance of the duties of employment for the purpose of inducing, influencing, or coercing a change in the working conditions, compensation, rights, privileges, or obligations of employment.

SECTION 19. AGREEMENTS VALID – ENFORCEMENT.

All collective bargaining agreements and other agreements between the employer and exclusive representative are valid and enforceable according to their terms when entered into in accordance with the provisions of this Labor Management Relations Ordinance.

SECTION 20. JUDICIAL ENFORCEMENT – STANDARD OF REVIEW.

A. The Board may request the District Court to enforce any order issued pursuant to the Labor Management Relations Ordinance, including those for appropriate temporary relief and restraining orders. The Court shall consider the request for enforcement on the record made before the Board. The Court shall uphold the action of the Board and take appropriate action to enforce it unless the Court concludes that the order is:

- 1) Arbitrary, capricious, or an abuse of discretion;
- 2) Not supported by substantial evidence on the record considered as a whole; or

3) Otherwise not in accordance with law.

B. Any person or party, including any labor organization, affected by a final regulation, order, or decision of the Board, may appeal to the District Court for further relief. All such appeals shall be based upon the record made at the Board hearing. All such appeals to the District Court shall be taken within thirty (30) calendar days of the date of the final regulation, order, or decision of the Board. Actions taken by the Board shall be affirmed unless the Court concludes that the action is:

- 1) Arbitrary, capricious, or an abuse of discretion;
- 2) Not supported by substantial evidence on the record taken as a whole; or
- 3) Otherwise not in accordance with law.

SECTION 21. SEVERABILITY.

If any part or application of the County of Chaves Labor Management Relations Ordinance is held invalid, the remainder or its application to other situations or persons shall not be affected.

SECTION 22. EFFECTIVE DATE.

The effective date of the County of Chaves Labor Management Relations Ordinance is _____, 2020.

PASSED, APPROVED, SIGNED AND ADOPTED THIS ____ DAY OF _____, 2020.

BOARD OF CHAVES COUNTY COMMISSIONERS

By: _____
William E Cavin, Chairman

ATTEST:

Dave Kunko, County Clerk

AGENDA ITEM: 2 Resolution R-20-043

MEETING DATE: December 17, 2020 Approval of Temporary Transfer

STAFF SUMMARY REPORT

ACTION REQUESTED BY: Anabel Barraza, Chief Financial Officer

ACTION REQUESTED:
Approval of Resolution R-20-043

ITEM SUMMARY:

The Finance Department is requesting a temporary transfer from the General Fund to the Grant Fund in the amount of \$250,000. This is a temporary loan that will be reflected on both balance sheets. This is due to all reimbursable grants that have pending requests to be approved by DFA. Once the reimbursements are received, the temporary loan will be paid back to the General Fund

Due to this temporary transfer not being a budgetary item, it will not be submitted as a budget adjustment to DFA.

Staff recommends approval.

SUPPORT DOCUMENTS:

Resolution R-20-043

SUMMARY BY: Anabel Barraza

TITLE: Chief Financial Officer

RESOLUTION R-20-043

TEMPORARY TRANSFER OF GENERAL FUND TO GRANT FUND

WHEREAS, at a regular meeting of the Board of Chaves County Commissioners held on December 17, 2020 the following was among the proceedings:

WHEREAS, reimbursable grants require expenditures first and thereafter a requested reimbursement is done; and,

WHEREAS, once the reimbursements have been received, the temporary transfer can be repaid; and

WHEREAS, there are sufficient funds available for the temporary transfer from the General Fund; and,

NOW, THEREFORE, BE IT RESOLVED, THAT THE BOARD OF COUNTY COMMISSIONERS, CHAVES COUNTY, STATE OF NEW MEXICO, hereby approves the temporary transfer of funds in the amount of \$250,000 from General Fund to Grant Fund.

Done at Roswell, New Mexico, this 17th day of December 2020.

BOARD OF CHAVES COUNTY COMMISSIONERS

William E. Cavin, Chairman

Jeff Bilberry, Vice-Chairman

ATTEST:

Dara Dana, Member

T. Calder Ezzell Jr, Member

Dave Kunko
County Clerk

Robert Corn, Member

AGENDA ITEM: 3

Resolution R-20-044 Reinstatement of Meat
Inspection Program in New Mexico

MEETING DATE: December 17, 2020

STAFF SUMMARY REPORT

ACTION REQUESTED BY: Bill Williams, Public Services Director

ACTION REQUESTED: Approve Resolution supporting Reinstatement of a Meat
Inspection Program in New Mexico

ITEM SUMMARY:

This resolution supports the reinstatement of a Meat Inspection Program in New Mexico. When states rescinded their meat inspection programs and went into the federal meat inspection program overseen by the USDA, they lost their ability to directly sell their products out of state. A state-run meat inspection program would level the playing field for local producers and allow them to package and sell New Mexico labeled products outside of New Mexico.

Staff recommends approval.

SUPPORT DOCUMENTS: Resolution R-20-044

SUMMARY BY: Bill Williams

TITLE: Public Services Director

RESOLUTION NO. R-20-044
A RESOLUTION SUPPORTING REINSTATEMENT OF A STATE MEAT INSPECTION
PROGRAM IN NEW MEXICO

WHEREAS, New Mexico livestock producers have historically been known for producing the highest quality of meat; and

WHEREAS, Cash receipts for livestock products in New Mexico are valued at more than \$2 billion dollars with meat animals accounting for \$824 million dollars; and

WHEREAS, Some 80 percent of the meat packing industry needs are serviced by only four companies; and

WHEREAS, For decades this concentration has limited the income of cow-calf producers and others in the food chain; and

WHEREAS, The pandemic of 2020 has pointed out the ills of this packer concentration for meat producers and consumers alike; and

WHEREAS, Consumers are now demanding to know where their food comes from; and

WHEREAS, Consumers are demonstrating a preference for purchasing locally grown meat; and

WHEREAS, New Mexico does not currently have a regulatory process in place that would foster locally grown meat products; and

WHEREAS, There is public, legislative and administrative support to reinstate New Mexico meat inspection;

NOW, THEREFORE, Be it resolved that the Board of County Commissioners of Chaves County supports the reinstatement of state meat inspection for New Mexico.

LET IT FURTHER BE RESOLVED, that the State of New Mexico recognize the needed changes to the State Meat Inspection Program and that the current system fails to support New Mexico meat producers.

Done this 17th day of December, 2020.

BOARD OF CHAVES COUNTY COMMISSIONERS

William E. Cavin, Chairman

Jeff Bilberry, Vice-Chairman

ATTEST:

Dara Dana, Member

T. Calder Ezzell Jr, Member

Dave Kunko
County Clerk

Robert Corn, Member

AGENDA ITEM: 4

Courthouse Security Upgrade Project

MEETING DATE: December 17, 2020

STAFF SUMMARY REPORT

ACTION REQUESTED BY: Stanton L. Riggs, County Manager

ACTION REQUESTED: Authorize the Chairman to Sign all Documents Associated with this Project

ITEM SUMMARY:

During the 2020 legislative session Chaves County received \$480,000 in capital outlay for a security upgrade at the courthouse. APIC Solutions is a security company who performs this type of work. APIC is a vendor on state contract. The quote to do the work is \$364,549.82. Staff is requesting that the commission authorize the Chairman to sign all documents associated with this project.

Staff recommends approval.

SUPPORT DOCUMENTS: None

SUMMARY BY: Stanton L. Riggs

TITLE: County Manager

AGENDA ITEM: 5

Permission to Publish for a Public
Hearing Regarding Potential Low
Income Tax Rebate Ordinance

MEETING DATE: December 17, 2020

STAFF SUMMARY REPORT

ACTION REQUESTED BY: Stanton L. Riggs, County Manager

ACTION REQUESTED: Permission to Publish

ITEM SUMMARY:

According to Section 7-2-14.3G, NMSA 1978, of every odd numbered year, the Board of County Commissioners shall conduct a public hearing on the question of whether a property tax rebate benefitting low income property tax payers in the County should be made available through adoption of a County Ordinance. At the public hearing, the Board shall take action on the question and if a majority votes to adopt an ordinance, it must be adopted within 30 days of the public hearing. The public hearing would take place at 9:00 am on Thursday, January 21, 2021 in the Commission Chambers.

Staff recommends approval for permission to publish for public hearing.

SUPPORT DOCUMENTS:

SUMMARY BY: Stanton L Riggs

TITLE: County Manager

AGENDA ITEM: 6

2021 Chaves County Annual Road Hearing Schedule

MEETING DATE: December 17, 2020

STAFF SUMMARY REPORT

ACTION REQUESTED BY: Bill Williams, Public Services Director

ACTION REQUESTED: Approve schedule

ITEM SUMMARY:

Submitted is the proposed schedule for the 2021 Chaves County Annual Road Hearing.

Staff recommends approval.

SUPPORT DOCUMENTS: Proposed 2021 Annual Road Hearing Schedule

SUMMARY BY: Bill Williams

TITLE: Public Services Director

2021 CHAVES COUNTY ROAD HEARING SCHEDULE

- | | |
|---------------------------|---|
| December 17, 2020 | ➤ Commissioners approve 2021 schedule |
| December 27, 2019 | ➤ Applications available
(Publish December 27, 2020 and January 10, 2021) |
| February 5, 2021 | ➤ All road applications deadline |
| February 18, 2021 | ➤ Commission appoints freeholders |
| February 22-March 5, 2021 | ➤ Post notice along proposed roads |
| March 8-12, 2021 | ➤ Freeholders view roads |
| March 18, 2021 | ➤ Commissioners receive Freeholder reports
Final approval becomes effective on approved new road and road maintenance status change from 2020 due to COVID delay |
| March 21, 2021 | ➤ Notice for Road Hearing
(Publish March 21 and March 28, 2021) |
| April 15, 2021 | ➤ 2021 Public Road Hearing
Commissioners review applications, Freeholder reports and receive public input- NO DECISION MADE AT THIS HEARING |
| April 20-23, 2021 | ➤ Commissioners view road requests; Commission has discretion to consider action following viewing (if action is taken, no action will be required May 20, 2021) |
| May 20, 2021 | ➤ Commissioners give final decisions on road vacation and/or preliminary approval on new roads and road maintenance status changes |
| December 16, 2021 | ➤ Evaluation of stipulations and criteria-Performance resolution and final approval on new roads and maintenance status change |
| January 1, 2022 | ➤ Final approval becomes effective on approved new road and road maintenance requests |

AGENDA ITEM: 7

Waive road cut fee for
Berrendo Cooperative Water
Users Association, Inc

MEETING DATE: December 17, 2020

STAFF SUMMARY REPORT

ACTION REQUESTED BY: Bill Williams, Public Services Director

ACTION REQUESTED: Waive Fee for Road Cut

ITEM SUMMARY:

The Chaves County Right-of Way Use Permit Ordinance requires that road pavement excavations in excess of 24" be approved by the Chaves County Board of Commissioners. Normally, this would be done prior to an excavation however, on October 6, 2020, Berrendo Cooperative Water Users Association, Inc. was forced to perform an emergency repair to a line that had ruptured. The line at 5906 Kincaid Road required an excavation measuring 21' x 30". The road cut fee was determined to be \$1,940.00. The road was repaired as per Ordinance #44 requirements. Berrendo Water Cooperative continues to provide a valuable service to the residents of Chaves County.

Staff recommends waiver of road excavation fee.

SUPPORT DOCUMENTS: permit application

SUMMARY BY: Bill Williams

TITLE: Public Services Director

PERMIT FOR INSTALLATION OF UTILITIES ALONG PUBLIC ROADS

TO: CHAVES COUNTY BOARD OF COMMISSIONERS
c/o Chaves County Road Department – Attn: Angelo Gurule
1505 E. Brasher Rd.
Roswell, NM 88203

Permit No. _____

APPLICATION is hereby made by: Elizabeth Drabek

Date: October 6, 2020

Berrendo Cooperative Water Users Association.
2004 E. 19th Street. Roswell, NM 88201
575-623-7665
Email: Berrendowua@gmail.com

for permission to locate, install and maintain a Water Line Repair

for the purpose of Water Distribution

along or across the following described public road: Please see attached map.

Location: 5906 Kincaid Road

Handwritten notes: 21 x 30 Cut in Road, 11 inches

THE UNDERSIGNED APPLICANT RESPECTFULLY SHOWS:

- 1. That the applicant will at all times indemnify and save harmless the County of Chaves and all governmental subdivisions and all boards, officers, and employees thereof from any and all claims of every kind or character caused by or incident to the construction, location, maintenance, or condition of said Water Line Repair and will promptly reimburse the County and all such subdivisions, boards, officers, and employees for any and all cost and expenses incurred by them or any of them in resisting any such claim or claims.
2. That if by reason of any change in the location, construction or grade of the public road upon which any portion of said Water Line Repair is constructed, or by reason of changing traffic conditions or otherwise, it shall become advisable in the opinion of the Board of County Commissioners that said should be removed or relocated, the Applicant, upon receipt of written instructions from the Board of County Commissioners, will remove said Water Line Repair or change its location in such a manner as the Board of County Commissioners may approve, without expense to the County.
3. That said Water Line Repair will at all times be kept in good repair, free from leaks or breaks of any kind, which may injure the public road or inconvenience the traveling public.
4. That Chaves County Ordinance No. 44 (by reference) shall be incorporated in this agreement and that the Applicant shall fully comply with said Ordinance while performing any and all work associated with this permit.
5. That following completion of any and all work involved in the installation and maintenance of utilities along the public road, Applicant stipulates and agrees that the property shall be returned to its original condition or better.
6. That the approval of the proposed construction of said Water Line Repair as applied for and aforesaid shall not be construed as granting any title or easement to any property of the County of Chaves.
7. That if the Applicant should at any time fail to promptly and fully perform all of the obligations imposed upon him, the Board of County Commissioners may, at their option, cause the same to be fully carried out and performed, and the Applicant will promptly reimburse the Board of County Commissioners for all costs and expenses incident thereto.
8. That the Board of County Commissioners of Chaves County, or their designee or employee, shall have the right to inspect all work performed by Applicant in the installation and maintenance of the utility along the public road. Said right of inspection shall include the right to approve or disapprove of the work being performed, the authority to order that

all work involving the installation or maintenance of utilities along a public road ceases until such time as the Applicant shall bring the installation or maintenance into compliance with the reasonable request of the County, and shall further include the right to order additional work to be performed to return the property affected by the installation or maintenance of utilities to its original condition.

9. This agreement shall be binding upon any contractors, subcontractors, the successors and assigns of the Applicant.

10. The granting of approval of the proposed construction so applied for, either in accordance with said application or pursuant to any modification thereof which is accepted by the Applicant, shall constitute an acceptance of this agreement by the Board of County Commissioners, and order the same as a binding contract.

11. The Applicant proposes to commence the work applied for with this permit on or about 10.06.2020 and estimates the work to be fully completed in 10.06.2020 calendar days after commencement.

12. The authority to perform any work in any County street or road right-of-way shall terminate ninety (90) calendar days after the date of approval of this permit, unless a written request for extension of the termination date has been filed with and approved by the Chaves County Road Operations Director.

13. Witness whereof said Applicant has caused these presents to be executed by its duly authorized officers on this 7 day of Oct, 2020.

(Please enclose plat)

BY: Mike Brumlow

TITLE: Service Manager

APPROVAL OF THIS PERMIT IS HEREBY GRANTED (OR DENIED) THIS 7 DAY OF Oct, 2020.

RECOMMENDED FOR APPROVAL BY:

BOARD OF COUNTY COMMISSIONERS

[Signature]
PROJECT SUPERVISOR

CHAIRMAN

APPROVED BY:

[Signature]
ROAD OPERATIONS DIRECTOR

3 Copies – Applicant, Road Department, Finance Department

UTILITY COST NOTIFICATION

Chaves County Right-of-way use Permit

Date 10-8-20

Applicant Berrendo Water

Address 2004 E 19th
Roswell NM 88201

Permit Fee \$ 1,940⁰⁰

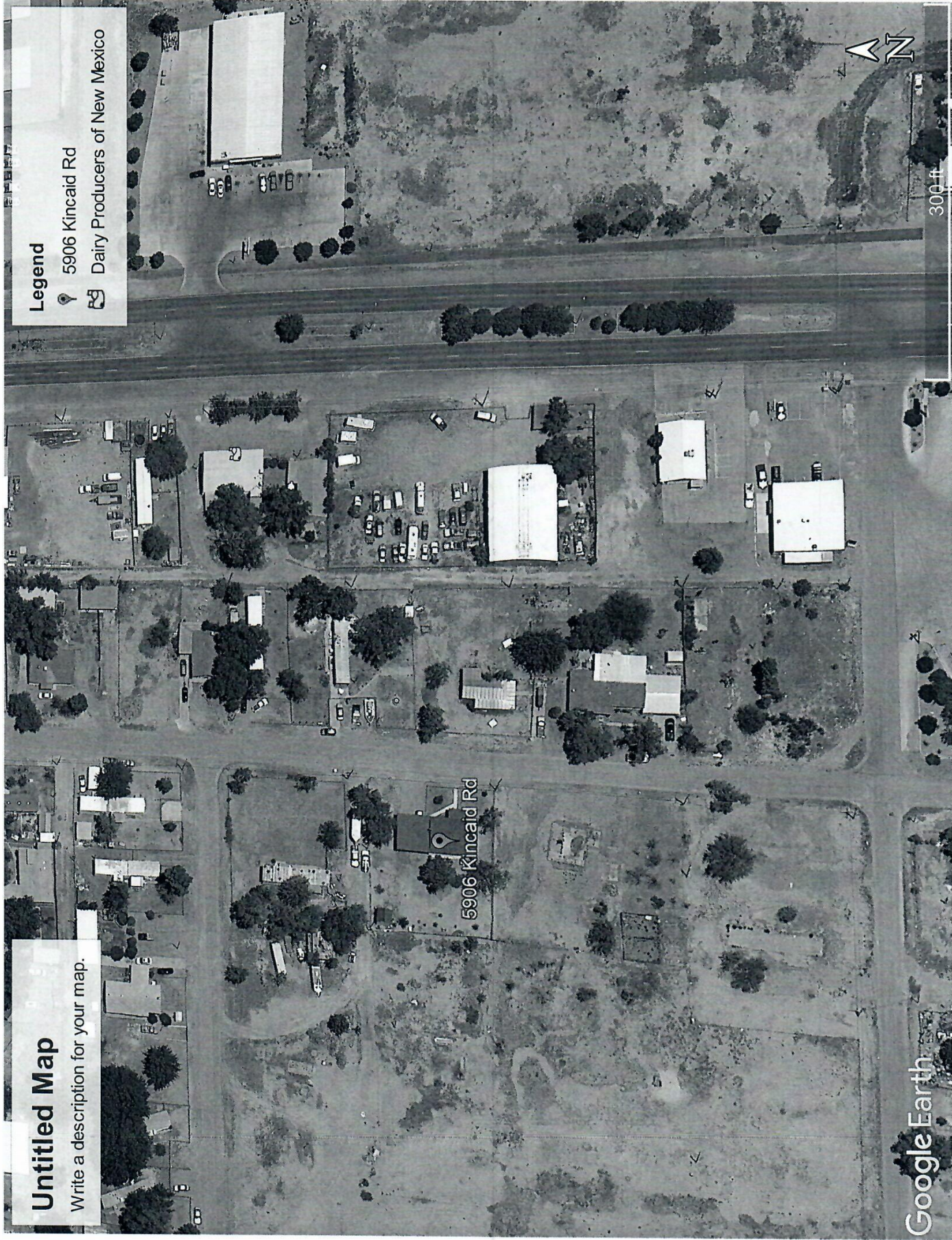
Permit Number 2416
Ayle B C
Agent

Untitled Map

Write a description for your map.

Legend

-  5906 Kincaid Rd
-  Dairy Producers of New Mexico



Commission Meeting 17-Dec-20

STAFF SUMMARY REPORT

ACTION REQUESTED BY: Joe Sedillo, Finance Director
(624-6646)

ACTION REQUESTED:
Approval of Checks

ITEM SUMMARY:

A/P:	06-Nov-20	\$713,685.42
	13-Nov-20	\$146,472.98
	18-Nov-20	\$19,940.40
	19-Nov-20	\$2,500.00
	20-Nov-20	\$211,044.94
	25-Nov-20	\$191,274.27
A/P VOIDS	01-Nov-20	-\$175,469.66
PAYROLL:	01-Nov-20 REGULAR	\$286,035.24
	FINALS	\$9,371.45
	15-Nov-20 REGULAR	\$283,125.39
	FINALS	\$2,774.90

Grand Total Checks to be Approved: \$1,690,755.33

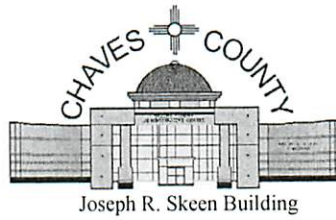
SUPPORT DOCUMENTS:

Copies of Bills Lists

SUMMARY BY: Cindy Mealand

TITLE: A/P Officer

CHAVES COUNTY FINANCE
ACCOUNTS PAYABLE
P.O. Box 1597
Roswell, NM 88202-1597
Phone 575-624-6677 or 575-624-6620



COMMISSIONERS
Dara Dana · District 1
T Calder Ezzell Jr. · District 2
Jeff Bilberry · District 3
Robert Corn · District 4
William E. Cavin · District 5

Finance Director
Joe Sedillo

County Manager
Stanton L. Riggs

Final Payment Register

Date: 11-6-20
Packet# 01520

Date: 11-18-20
Packet# 01535

Date: _____
Packet# _____

Date: 11-6-20
Packet# 01523

Date: 11-19-20
Packet# 01538

Date: _____
Packet# _____

Date: 11-13-20
Packet# 01529

Date: 11-20-20
Packet# 01541

Date: _____
Packet# _____

Date: 11-13-20
Packet# 01531

Date: 11-25-20
Packet# 01545

Date: _____
Packet# _____

BOARD OF CHAVES COUNTY COMMISSIONERS

William E. Cavin, Chairman

Jeff Bilberry, Vice-Chairman

ATTEST:

Dara Dana, Member

Dave Kunko
County Clerk

T. Calder Ezzell Jr, Member

Robert Corn, Member



Expense Approval Register

Packet: APPKT01520 - CHECK RUN/11/06/20

Vendor Name	Payable Number	Post Date	Description (Item)	Account Number	Amount	
Vendor: ABC PROPANE						
ABC PROPANE	237329	11/01/2020	ACCT.#102721	452-8-832-223-000	699.18	
ABC PROPANE	237330	11/01/2020	ACCT.#102721	452-8-832-223-000	1,163.02	
ABC PROPANE	237344	11/01/2020	ACCT.#102721	452-8-832-223-000	872.40	
ABC PROPANE	237345	11/01/2020	ACCT.#102721	452-8-832-223-000	744.01	
ABC PROPANE	237383	11/01/2020	ACCT.#102721	452-8-832-223-000	680.68	
ABC PROPANE	237384	11/01/2020	ACC.T#102721	452-8-832-223-000	1,102.39	
					Vendor ABC PROPANE Total:	5,261.68
Vendor: ADE INCORPORATED						
ADE INCORPORATED	54548	11/02/2020	ACCT.#NMCHAS	432-7-761-237-000	50.00	
					Vendor ADE INCORPORATED Total:	50.00
Vendor: AMERICAN STEWARDS OF LIBERTY						
AMERICAN STEWARDS OF LI	954	11/01/2020	ASL COORDINATION SUPPOR	401-6-619-260-000	1,500.00	
AMERICAN STEWARDS OF LI	956	11/01/2020	ASL COORDINATION SUPPOR	401-6-619-260-000	1,500.00	
					Vendor AMERICAN STEWARDS OF LIBERTY Total:	3,000.00
Vendor: ARTESIA FIRE EQUIPMENT INC.						
ARTESIA FIRE EQUIPMENT IN	72773	11/01/2020	BAUER ANNUAL MAINT	412-8-815-221-000	990.27	
ARTESIA FIRE EQUIPMENT IN	73140	11/01/2020	LABOR & MATERIAL	412-8-815-221-000	2,799.77	
ARTESIA FIRE EQUIPMENT IN	73142	11/01/2020	LABOR & MATERIAL	412-8-815-221-000	12,368.61	
					Vendor ARTESIA FIRE EQUIPMENT INC. Total:	16,158.65
Vendor: ASPEN OF NEW MEXICO						
ASPEN OF NEW MEXICO	FY 21-4 ASPEN	11/04/2020	LDWI DISTRIBUTION/FY 20-2	432-7-761-267-000	416.66	
					Vendor ASPEN OF NEW MEXICO Total:	416.66
Vendor: BERNALILLO COUNTY						
BERNALILLO COUNTY	64347	11/01/2020	ACCT.#1440000062	401-6-645-268-000	450.00	
					Vendor BERNALILLO COUNTY Total:	450.00
Vendor: BREWER OIL CO						
BREWER OIL CO	12253309	11/01/2020	ACCT.#12290075	402-6-653-230-000	150.01	
					Vendor BREWER OIL CO Total:	150.01
Vendor: CARRIE HARDY						
CARRIE HARDY	INV0005296	11/05/2020	Thomas Ray/DM-2010-331	401-2-200-018-000	250.00	
					Vendor CARRIE HARDY Total:	250.00
Vendor: CENTRAL VALLEY ELECTRIC COOP						
CENTRAL VALLEY ELECTRIC C	CC021141	11/01/2020	ACCT.#23898800	410-8-816-341-000	17.80	
CENTRAL VALLEY ELECTRIC C	CC021141	11/01/2020	ACCT.#10114001	410-8-816-341-000	263.98	
CENTRAL VALLEY ELECTRIC C	CC021142	11/01/2020	ACCT.#12209501	401-6-691-243-000	410.20	
CENTRAL VALLEY ELECTRIC C	CC021142	11/01/2020	ACCT.#10147201	401-6-691-243-000	42.71	
CENTRAL VALLEY ELECTRIC C	CC021142	11/01/2020	ACCT.#12001802	401-6-691-243-000	54.57	
CENTRAL VALLEY ELECTRIC C	CC021142	11/01/2020	ACCT.#23133100	410-8-816-341-000	130.92	
CENTRAL VALLEY ELECTRIC C	CC021142	11/01/2020	ACCT.#6695501	414-8-819-341-000	129.90	
CENTRAL VALLEY ELECTRIC C	CC021142	11/01/2020	ACCT.#24208300	437-6-659-341-000	37.14	
CENTRAL VALLEY ELECTRIC C	CC021142	11/01/2020	ACCT.#22987100	437-6-659-341-000	44.60	
CENTRAL VALLEY ELECTRIC C	CC021142	11/01/2020	ACCT.#24186400	437-6-659-341-000	47.29	
CENTRAL VALLEY ELECTRIC C	CC021142	11/01/2020	ACCT.#12412501	437-6-659-341-000	49.55	
CENTRAL VALLEY ELECTRIC C	CC021143	11/01/2020	ACCT.#12413201	411-8-814-341-000	65.32	
CENTRAL VALLEY ELECTRIC C	CC021143	11/01/2020	ACCT.#12026501	411-8-814-341-000	52.61	
CENTRAL VALLEY ELECTRIC C	CC021143	11/01/2020	ACCT.#12413301	411-8-814-341-000	8.90	
CENTRAL VALLEY ELECTRIC C	CC021143	11/01/2020	ACCT.#12413101	411-8-814-341-000	9.69	
					Vendor CENTRAL VALLEY ELECTRIC COOP Total:	1,365.18

Expense Approval Register

Packet: APPKT01520 - CHECK RUN/11/06/20

Vendor Name	Payable Number	Post Date	Description (Item)	Account Number	Amount
Vendor: CINTAS CORPORATION #2					
CINTAS CORPORATION #2	8404863625	11/01/2020	ACCT.#10187763	402-6-653-230-000	243.71
Vendor CINTAS CORPORATION #2 Total:					243.71
Vendor: CITY OF ROSWELL					
CITY OF ROSWELL	CC021126	11/01/2020	ACCT.#137415-52228	452-8-832-341-000	17.47
CITY OF ROSWELL	CC021157	11/01/2020	ACCT.#137417-52230	402-6-653-291-000	17.47
CITY OF ROSWELL	CC021158	11/01/2020	ACCT.#137417-52234	402-6-653-291-000	17.47
CITY OF ROSWELL	CC021160	11/01/2020	ACCT.#137417-52236	402-6-653-291-000	190.97
CITY OF ROSWELL	CC021161	11/01/2020	ACCT.#137417-52238	402-6-653-291-000	17.47
CITY OF ROSWELL	CC021162	11/01/2020	ACCT.#137417-52240	402-6-653-291-000	226.32
CITY OF ROSWELL	CC021163	11/01/2020	ACCT.#137417-52242	402-6-653-291-000	17.47
CITY OF ROSWELL	CC021164	11/01/2020	ACCT.#137417-52246	402-6-653-291-000	81.73
Vendor CITY OF ROSWELL Total:					586.37
Vendor: CITY OF ROSWELL					
CITY OF ROSWELL	CC021125	11/01/2020	ANNUAL ALLOCATION/FY 20-	635-6-671-409-000	122,235.96
Vendor CITY OF ROSWELL Total:					122,235.96
Vendor: CODE 3 SERVICE					
CODE 3 SERVICE	201040-1	11/01/2020	MULTICAST RADIO SYSTEM	631-8-884-230-000	26,960.84
CODE 3 SERVICE	201040	10/26/2020	MULTICAST RADIO SYSTEM	631-8-884-230-000	26,960.84
CODE 3 SERVICE	201042-1	11/01/2020	COUNTY WIDE RADIO PROJE	635-6-682-371-000	59,523.99
CODE 3 SERVICE	201042	10/26/2020	RADIO PROJECT/CHAVES CO	635-6-682-371-000	59,523.99
Vendor CODE 3 SERVICE Total:					172,969.66
Vendor: CONSTRUCTORS INC					
CONSTRUCTORS INC	127178	11/01/2020	CHIP/SURFACE TREATMENT	402-6-653-291-000	807.84
CONSTRUCTORS INC	127179	11/01/2020	CHIP/SURFACE TREATMENT	402-6-653-291-000	1,088.55
CONSTRUCTORS INC	127180	11/01/2020	CHIP/SURFACE TREATMENT	402-6-653-291-000	1,847.11
Vendor CONSTRUCTORS INC Total:					3,743.50
Vendor: COOPERATIVE EDUCATIONAL SVCS.					
COOPERATIVE EDUCATIONAL	24-108715	11/01/2020	ACCT.#CHAVESCOUNTY	650-6-684-230-000	7,319.46
Vendor COOPERATIVE EDUCATIONAL SVCS. Total:					7,319.46
Vendor: CUMBERLAND WATER CO-OP					
CUMBERLAND WATER CO-O	CC021138	11/01/2020	ACCT.#G215	401-6-691-341-000	39.41
CUMBERLAND WATER CO-O	CC021139	11/01/2020	ACCT.#G105	410-8-816-341-000	21.43
CUMBERLAND WATER CO-O	CC021140	11/01/2020	ACCT.#B1085	408-8-812-340-000	26.11
Vendor CUMBERLAND WATER CO-OP Total:					86.95
Vendor: D & N SPECIALTIES					
D & N SPECIALTIES	3568	11/01/2020	NAME PLATES	401-6-611-230-000	141.10
Vendor D & N SPECIALTIES Total:					141.10
Vendor: DEERE CREDIT, INC					
DEERE CREDIT, INC	2409951	11/01/2020	ACCT.#030-0065559-000	402-6-653-251-000	3,309.22
DEERE CREDIT, INC	2409952	11/01/2020	ACCT.#030-0065560-000	402-6-653-251-000	3,309.22
DEERE CREDIT, INC	2409953	11/01/2020	ACCT.#030-0065561-000	402-6-653-251-000	3,309.22
DEERE CREDIT, INC	2409954	11/01/2020	ACCT.#030-0065562-000	402-6-653-251-000	3,309.22
Vendor DEERE CREDIT, INC Total:					13,236.88
Vendor: DEMAREES PUMPING SERVICE					
DEMAREES PUMPING SERVI	11387	11/01/2020	RENTAL AND SERVICE	402-6-653-251-000	269.58
Vendor DEMAREES PUMPING SERVICE Total:					269.58
Vendor: DEXTER CONSOLIDATED SCHOOLS					
DEXTER CONSOLIDATED SCH	FY 21-4 DEX-TNT	11/04/2020	LDWI DISTRIBUTION/FY 20-2	432-7-761-267-000	1,000.00
Vendor DEXTER CONSOLIDATED SCHOOLS Total:					1,000.00
Vendor: DIANE F. TAYLOR					
DIANE F. TAYLOR	FY 21-4 DT	11/04/2020	LDWI DISTRIBUTION/FY 20-2	432-7-761-267-000	3,250.00
Vendor DIANE F. TAYLOR Total:					3,250.00
Vendor: DIANNE MEDA					
DIANNE MEDA	FY 21-4 SCREEN	11/04/2020	LDWI DISTRIBUTION/FY 20-2	432-7-766-267-000	3,000.00
Vendor DIANNE MEDA Total:					3,000.00

Expense Approval Register

Packet: APPKT01520 - CHECK RUN/11/06/20

Vendor Name	Payable Number	Post Date	Description (Item)	Account Number	Amount
Vendor: ECOLAB INC					
ECOLAB INC	4008765539	11/01/2020	ACCT.#504109395	650-6-684-230-000	353.15
ECOLAB INC	4008766269	11/01/2020	ACCT.#504109395	650-6-684-230-000	145.35
Vendor ECOLAB INC Total:					498.50
Vendor: FRANK G. MAGOURILOS					
FRANK G. MAGOURILOS	FY 21-4 FM	11/04/2020	LDWI DISTRIBUTION/FY 20-2	432-7-761-267-000	1,100.00
Vendor FRANK G. MAGOURILOS Total:					1,100.00
Vendor: IUPA, CHAVES COUNTY SHERIFF'S ASSOC. #507					
IUPA, CHAVES COUNTY SHER	INV0005307	11/05/2020	James Dallas McDaniel Unio	401-2-200-010-000	25.00
IUPA, CHAVES COUNTY SHER	INV0005308	11/05/2020	Maria R. Cassidy Union Dues	401-2-200-010-000	25.00
IUPA, CHAVES COUNTY SHER	INV0005309	11/05/2020	Michael D. Shannon Union D	401-2-200-010-000	25.00
IUPA, CHAVES COUNTY SHER	INV0005310	11/05/2020	Douglas C. Hohle Union Dues	401-2-200-010-000	25.00
IUPA, CHAVES COUNTY SHER	INV0005311	11/05/2020	Andres G. Salas Union Dues	401-2-200-010-000	23.57
IUPA, CHAVES COUNTY SHER	INV0005311	11/05/2020	Andres G. Salas Union Dues	431-2-200-010-000	1.43
IUPA, CHAVES COUNTY SHER	INV0005312	11/05/2020	Amanda Beagles-Clark Union	401-2-200-010-000	25.00
IUPA, CHAVES COUNTY SHER	INV0005313	11/05/2020	Travis W. Hardy Union Dues	401-2-200-010-000	25.00
IUPA, CHAVES COUNTY SHER	INV0005314	11/05/2020	Pedro J. Silvas Union Dues	401-2-200-010-000	25.00
IUPA, CHAVES COUNTY SHER	INV0005315	11/05/2020	James Johnson Union Dues	401-2-200-010-000	22.99
IUPA, CHAVES COUNTY SHER	INV0005315	11/05/2020	James Johnson Union Dues	431-2-200-010-000	2.01
IUPA, CHAVES COUNTY SHER	INV0005316	11/05/2020	Jeromy W. Parmer Union Du	401-2-200-010-000	25.00
IUPA, CHAVES COUNTY SHER	INV0005317	11/05/2020	Charles Drake Union Dues	401-2-200-010-000	25.00
IUPA, CHAVES COUNTY SHER	INV0005318	11/05/2020	Olivia Padilla Union Dues	401-2-200-010-000	25.00
IUPA, CHAVES COUNTY SHER	INV0005319	11/05/2020	David Whitzel Union Dues	401-2-200-010-000	25.00
IUPA, CHAVES COUNTY SHER	INV0005320	11/05/2020	Miguel Barrientos Union Due	401-2-200-010-000	22.21
IUPA, CHAVES COUNTY SHER	INV0005320	11/05/2020	Miguel Barrientos Union Due	431-2-200-010-000	2.79
IUPA, CHAVES COUNTY SHER	INV0005321	11/05/2020	GAUGE KENNARD	401-2-200-010-000	25.00
Vendor IUPA, CHAVES COUNTY SHERIFF'S ASSOC. #507 Total:					375.00
Vendor: J & H SERVICES INC					
J & H SERVICES INC	CC021123	11/01/2020	PROFESSIONAL SERVICES	631-8-884-247-000	3,990.24
J & H SERVICES INC	CC021124	11/01/2020	PROFESSIONAL SERVICES	631-8-884-247-000	9,211.95
Vendor J & H SERVICES INC Total:					13,202.19
Vendor: KANSAS STATE BANK OF MANHATTAN					
KANSAS STATE BANK OF MA	2-1	11/05/2020	ACCT.#3357431	402-6-653-251-000	1,647.40
KANSAS STATE BANK OF MA	8	11/05/2020	ACCT.#3356805	402-6-653-251-000	1,584.93
Vendor KANSAS STATE BANK OF MANHATTAN Total:					3,232.33
Vendor: LAKE ARTHUR MUNICIPAL SCHOOLS					
LAKE ARTHUR MUNICIPAL SC	FY 21-4 LA-TNT	11/04/2020	LDWI DISTRIBUTION/FY 20-2	432-7-761-267-000	1,000.00
Vendor LAKE ARTHUR MUNICIPAL SCHOOLS Total:					1,000.00
Vendor: MIRANDA PEST CONTROL					
MIRANDA PEST CONTROL	CC021128	11/03/2020	PEST CONTROL SERVICE	412-8-815-267-000	64.70
MIRANDA PEST CONTROL	CC021129	11/03/2020	PEST CONTROL SERVICE	412-8-815-267-000	26.96
MIRANDA PEST CONTROL	CC021130	11/03/2020	PEST CONTROL SERVICE	412-8-815-267-000	26.96
MIRANDA PEST CONTROL	CC021131	11/03/2020	PEST CONTROL SERVICE	412-8-815-267-000	53.92
MIRANDA PEST CONTROL	CC021135	11/03/2020	PEST CONTROL SERVICE	452-8-832-267-000	43.13
Vendor MIRANDA PEST CONTROL Total:					215.67
Vendor: NEW MEXICO GAS COMPANY INC					
NEW MEXICO GAS COMPAN	CC021153	11/01/2020	ACCT.#076281612-0786941-	401-6-693-341-000	23.95
NEW MEXICO GAS COMPAN	CC021154	11/01/2020	ACCT.#076846512-1202378-	411-8-814-341-000	39.59
NEW MEXICO GAS COMPAN	CC021155	11/01/2020	ACCT.#075706312-0781188-	412-8-815-341-000	33.70
Vendor NEW MEXICO GAS COMPANY INC Total:					97.24
Vendor: NM GEN SVCS RISK MGMT					
NM GEN SVCS RISK MGMT	CC021132	11/05/2020	ADJUSTMENT	401-2-200-007-000	1,208.91
NM GEN SVCS RISK MGMT	CC021132	11/05/2020	ADJUSTMENT	401-2-200-007-000	140.00
NM GEN SVCS RISK MGMT	CC021132	11/05/2020	MEDICAL	401-2-200-007-000	157,365.16
NM GEN SVCS RISK MGMT	CC021132	11/05/2020	MEDICAL	402-2-200-007-000	39,544.55
NM GEN SVCS RISK MGMT	CC021132	11/05/2020	MEDICAL	427-2-200-007-000	1,746.20
NM GEN SVCS RISK MGMT	CC021132	11/05/2020	MEDICAL	432-2-200-007-000	3,170.00
NM GEN SVCS RISK MGMT	CC021132	11/05/2020	MEDICAL	435-2-200-007-000	4,385.90

Expense Approval Register

Packet: APPKT01520 - CHECK RUN/11/06/20

Vendor Name	Payable Number	Post Date	Description (Item)	Account Number	Amount
NM GEN SVCS RISK MGMT	CC021132	11/05/2020	MEDICAL	452-2-200-007-000	9,948.95
NM GEN SVCS RISK MGMT	CC021133	11/05/2020	PREMIUMS	401-2-200-021-000	1,560.66
NM GEN SVCS RISK MGMT	CC021133	11/05/2020	ADJUSTMENT	401-2-200-021-000	11.31
NM GEN SVCS RISK MGMT	CC021133	11/05/2020	ADJUSTMENTS	401-2-200-021-000	16.66
NM GEN SVCS RISK MGMT	CC021133	11/05/2020	PREMIUMS	402-2-200-021-000	369.51
NM GEN SVCS RISK MGMT	CC021133	11/05/2020	PREMIUMS	427-2-200-021-000	17.31
NM GEN SVCS RISK MGMT	CC021133	11/05/2020	PREMIUMS	432-2-200-021-000	33.32
NM GEN SVCS RISK MGMT	CC021133	11/05/2020	PREMIUMS	435-2-200-021-000	47.12
NM GEN SVCS RISK MGMT	CC021133	11/05/2020	PREMIUMS	437-2-200-021-000	13.15
NM GEN SVCS RISK MGMT	CC021133	11/05/2020	PREMIUMS	452-2-200-021-000	89.87
NM GEN SVCS RISK MGMT	CC021134	11/05/2020	ADJUSTMENT	401-2-200-005-000	5.79
NM GEN SVCS RISK MGMT	CC021134	11/05/2020	PREMIUMS	401-2-200-005-000	2,750.83
NM GEN SVCS RISK MGMT	CC021134	11/05/2020	ADJUSTMENT	401-2-200-005-000	9.88
NM GEN SVCS RISK MGMT	CC021134	11/05/2020	PREMIUMS	402-2-200-005-000	675.28
NM GEN SVCS RISK MGMT	CC021134	11/05/2020	PREMIUMS	427-2-200-005-000	206.54
NM GEN SVCS RISK MGMT	CC021134	11/05/2020	PREMIUMS	432-2-200-005-000	33.69
NM GEN SVCS RISK MGMT	CC021134	11/05/2020	PREMIUMS	435-2-200-005-000	71.77
NM GEN SVCS RISK MGMT	CC021134	11/05/2020	PREMIUMS	437-2-200-005-000	10.21
NM GEN SVCS RISK MGMT	CC021134	11/05/2020	PREMIUMS	452-2-200-005-000	187.89
Vendor NM GEN SVCS RISK MGMT Total:					223,620.46

Vendor: NM RETIREE HEALTH CARE AUTHORITY

NM RETIREE HEALTH CARE A	INV0005305	11/05/2020	NM RETIREE HEALTH CARE P	401-2-200-020-000	6,529.10
NM RETIREE HEALTH CARE A	INV0005305	11/05/2020	NM RETIREE HEALTH CARE P	402-2-200-020-000	1,821.93
NM RETIREE HEALTH CARE A	INV0005305	11/05/2020	NM RETIREE HEALTH CARE P	427-2-200-020-000	103.62
NM RETIREE HEALTH CARE A	INV0005305	11/05/2020	NM RETIREE HEALTH CARE P	432-2-200-020-000	105.68
NM RETIREE HEALTH CARE A	INV0005305	11/05/2020	NM RETIREE HEALTH CARE P	435-2-200-020-000	175.57
NM RETIREE HEALTH CARE A	INV0005305	11/05/2020	NM RETIREE HEALTH CARE P	437-2-200-020-000	57.89
NM RETIREE HEALTH CARE A	INV0005305	11/05/2020	NM RETIREE HEALTH CARE P	452-2-200-020-000	436.58
NM RETIREE HEALTH CARE A	INV0005306	11/05/2020	NM Retiree HealthCare Law	401-2-200-020-000	2,705.00
NM RETIREE HEALTH CARE A	INV0005306	11/05/2020	NM Retiree HealthCare Law	431-2-200-020-000	26.92
Vendor NM RETIREE HEALTH CARE AUTHORITY Total:					11,962.29

Vendor: QUADIENT FINANCE USA, INC

QUADIENT FINANCE USA, IN	11685567	11/01/2020	ACCT.#7900011001689986	401-6-619-339-000	4,040.00
Vendor QUADIENT FINANCE USA, INC Total:					4,040.00

Vendor: ROSWELL W.F.L., INC

ROSWELL W.F.L., INC	FY 21-3 WT	11/04/2020	CONTINUUM GRANT/FY 20-2	631-8-885-267-000	2,640.00
Vendor ROSWELL W.F.L., INC Total:					2,640.00

Vendor: SECURITY TRANSPORT SERVICES INC

SECURITY TRANSPORT SERVI	205634	11/01/2020	PROFESSIONAL SERVICES	650-6-684-228-000	1,783.76
Vendor SECURITY TRANSPORT SERVICES INC Total:					1,783.76

Vendor: SERENITY COUNSELING

SERENITY COUNSELING	FY 21-4 SC	11/04/2020	LDWI DISTRIBUTION/FY 20-2	432-7-762-267-000	4,375.00
Vendor SERENITY COUNSELING Total:					4,375.00

Vendor: SOUTHWESTERN PUBLIC SERVICE CO

SOUTHWESTERN PUBLIC SER	CC021144	11/01/2020	ACCT.#54-0012497212-2	452-8-832-341-000	104.63
SOUTHWESTERN PUBLIC SER	CC021145	11/01/2020	ACCT.#54-3943758-6	401-6-691-243-000	36.02
SOUTHWESTERN PUBLIC SER	CC021146	11/01/2020	ACCT.#54-3943777-9	401-6-691-243-000	37.21
SOUTHWESTERN PUBLIC SER	CC021147	11/01/2020	ACCT.#54-3943607-4	401-7-751-341-000	27.99
SOUTHWESTERN PUBLIC SER	CC021148	11/01/2020	ACCT.#54-0010784288-9	412-8-815-341-000	53.30
SOUTHWESTERN PUBLIC SER	CC021149	11/01/2020	ACCT.#54-8936266-1	412-8-815-341-000	33.57
SOUTHWESTERN PUBLIC SER	CC021151	11/01/2020	ACCT.#54-3943782-6	412-8-815-341-000	61.34
Vendor SOUTHWESTERN PUBLIC SERVICE CO Total:					354.06

Vendor: STATE OF NEW MEXICO

STATE OF NEW MEXICO	INV0005291	11/05/2020	000099447-COLLINS	402-2-200-018-000	180.89
STATE OF NEW MEXICO	INV0005292	11/05/2020	000285627-COLLINS	402-2-200-018-000	95.54
STATE OF NEW MEXICO	INV0005293	11/05/2020	000165474-COLLINS	402-2-200-018-000	25.38
STATE OF NEW MEXICO	INV0005294	11/05/2020	000454540-MENDOZA	401-2-200-018-000	132.92
STATE OF NEW MEXICO	INV0005297	11/05/2020	J.JOHNSON 000088516	401-2-200-018-000	413.46

Expense Approval Register

Packet: APPKT01520 - CHECK RUN/11/06/20

Vendor Name	Payable Number	Post Date	Description (Item)	Account Number	Amount
STATE OF NEW MEXICO	INV0005297	11/05/2020	J.JOHNSON 000088516	431-2-200-018-000	36.08
STATE OF NEW MEXICO	INV0005298	11/05/2020	8954 MATTA	437-2-200-018-000	138.46
STATE OF NEW MEXICO	INV0005300	11/05/2020	000386026	402-2-200-018-000	138.46
Vendor STATE OF NEW MEXICO Total:					1,161.19
Vendor: TEXAS CHILD SUPPORT SDU					
TEXAS CHILD SUPPORT SDU	INV0005295	11/05/2020	0013625446-COBOS	401-2-200-018-000	327.23
TEXAS CHILD SUPPORT SDU	INV0005299	11/05/2020	0009646845 MATTA,RAY	437-2-200-011-000	189.98
Vendor TEXAS CHILD SUPPORT SDU Total:					517.21
Vendor: TOWN OF DEXTER					
TOWN OF DEXTER	CC021136	11/01/2020	ACCT.#1085	401-6-693-341-000	75.93
Vendor TOWN OF DEXTER Total:					75.93
Vendor: VISUAL EDGE, INC					
VISUAL EDGE, INC	28066378	11/01/2020	ACCT.#003-1344694-000	670-6-671-375-000	127.21
VISUAL EDGE, INC	28066379	11/01/2020	ACCT.#003-1365133-000	408-8-812-251-000	125.15
VISUAL EDGE, INC	28066380	11/01/2020	ACCT.#007-1539865-000	650-6-684-251-000	297.09
Vendor VISUAL EDGE, INC Total:					549.45
Vendor: WASTE CONNECTIONS OF N.M.					
WASTE CONNECTIONS OF N.	3164293	11/01/2020	ACCT.#5830-688853	452-8-832-267-000	119.26
Vendor WASTE CONNECTIONS OF N.M. Total:					119.26
Vendor: WEX BANK					
WEX BANK	68371952	11/01/2020	ACCT.#0496-00-237636-6	401-7-752-223-000	-10.48
WEX BANK	68371952	11/01/2020	ACCT.#0496-00-237636-6	401-7-752-223-000	786.39
WEX BANK	68371952	11/01/2020	ACCT.#0496-00-237636-6	412-8-815-227-000	238.76
WEX BANK	68371952	11/01/2020	ACCT.#0496-00-237636-6	414-8-819-227-000	81.03
Vendor WEX BANK Total:					1,095.70
Grand Total:					627,200.59



Expense Approval Register

Packet: APPKT01541 - CHECK RUN/11/20/20

Vendor Name	Payable Number	Post Date	Description (Item)	Account Number	Amount
Vendor: ABC PROPANE					
ABC PROPANE	235204	11/01/2020	ACCT.#102721	452-8-832-223-000	1,077.87
ABC PROPANE	235252	11/01/2020	ACCT.#102721	452-8-832-223-000	313.42
ABC PROPANE	235253	11/01/2020	ACCT.#102721	452-8-832-223-000	2,082.15
ABC PROPANE	236826	11/01/2020	ACCT.#102721	452-8-832-223-000	1,057.91
Vendor ABC PROPANE Total:					4,531.35
Vendor: ALTON'S POWER BLOCK GYM INC					
ALTON'S POWER BLOCK GYM	INV0005336	11/19/2020	ALTON'S POWER BLOCK GYM	401-2-200-024-000	24.10
ALTON'S POWER BLOCK GYM	INV0005336	11/19/2020	ALTON'S POWER BLOCK GYM	402-2-200-024-000	26.95
Vendor ALTON'S POWER BLOCK GYM INC Total:					51.05
Vendor: ANNA ROMERO					
ANNA ROMERO	CC021197	11/17/2020	LEA COUNTY/11/12/20	650-6-684-228-000	10.00
Vendor ANNA ROMERO Total:					10.00
Vendor: B MELTEL, LLC					
B MELTEL, LLC	111920	11/19/2020	RENT FOR JULY-NOV 2020	401-7-751-251-000	2,750.00
Vendor B MELTEL, LLC Total:					2,750.00
Vendor: BDR PREFERRED HOLDINGS, LLC					
BDR PREFERRED HOLDINGS,	X80200860001	11/01/2020	ACCT.#24324	402-6-653-221-000	446.00
Vendor BDR PREFERRED HOLDINGS, LLC Total:					446.00
Vendor: BERNALILLO COUNTY					
BERNALILLO COUNTY	64770	11/05/2020	ACCT.#1440000062	401-6-645-268-000	5,850.00
Vendor BERNALILLO COUNTY Total:					5,850.00
Vendor: CARRIE HARDY					
CARRIE HARDY	INV0005342	11/19/2020	Thomas Ray/DM-2010-331	401-2-200-018-000	250.00
Vendor CARRIE HARDY Total:					250.00
Vendor: COLONIAL LIFE & ACCIDENT CO					
COLONIAL LIFE & ACCIDENT	INV0005347	11/19/2020	COLONIAL LIFE PAYABLE	401-2-200-016-000	3,282.76
COLONIAL LIFE & ACCIDENT	INV0005347	11/19/2020	COLONIAL LIFE PAYABLE	402-2-200-016-000	592.17
COLONIAL LIFE & ACCIDENT	INV0005347	11/19/2020	COLONIAL LIFE PAYABLE	427-2-200-016-000	88.00
COLONIAL LIFE & ACCIDENT	INV0005347	11/19/2020	COLONIAL LIFE PAYABLE	435-2-200-016-000	14.48
COLONIAL LIFE & ACCIDENT	INV0005347	11/19/2020	COLONIAL LIFE PAYABLE	437-2-200-016-000	25.21
COLONIAL LIFE & ACCIDENT	INV0005347	11/19/2020	COLONIAL LIFE PAYABLE	452-2-200-016-000	111.61
Vendor COLONIAL LIFE & ACCIDENT CO Total:					4,114.23
Vendor: COOPERATIVE EDUCATIONAL SVCS.					
COOPERATIVE EDUCATIONAL	24-108499	11/01/2020	ACCT.#CHAVESCOUNTY	401-6-691-104-000	867.30
COOPERATIVE EDUCATIONAL	24-108707	11/01/2020	ACCT.#CHAVESCOUNTY	401-6-691-104-000	945.73
COOPERATIVE EDUCATIONAL	24-109431	11/13/2020	ACCT.#CHAVESCOUNTY	402-6-653-230-000	111.00
COOPERATIVE EDUCATIONAL	24-109465	11/16/2020	ACCT.#CHAVESCOUNTY	631-6-696-260-608	921.42
COOPERATIVE EDUCATIONAL	24-109470	11/16/2020	ACCT.#CHAVESCOUNTY	402-6-653-104-000	902.56
COOPERATIVE EDUCATIONAL	24-109474	11/16/2020	ACCT.#CHAVESCOUNTY	631-6-696-260-608	554.25
COOPERATIVE EDUCATIONAL	26-005518	11/13/2020	ACCT.#CHAVESCOUNTY	631-6-696-260-608	23,600.00
Vendor COOPERATIVE EDUCATIONAL SVCS. Total:					27,902.26
Vendor: DEERE CREDIT, INC					
DEERE CREDIT, INC	2415867	11/09/2020	ACCT.#030-0061556-007	402-6-653-251-000	3,235.72
Vendor DEERE CREDIT, INC Total:					3,235.72
Vendor: ELIOR INC					
ELIOR INC	INV2000095980	11/16/2020	ACCT.#C1921000	650-6-684-264-000	44,832.92
Vendor ELIOR INC Total:					44,832.92
Vendor: FISZBEIN INC					
FISZBEIN INC	CC021199	11/17/2020	ACCT.#13234A	427-6-639-270-000	340.60
FISZBEIN INC	CC021200	11/17/2020	ACCT.#13234A	427-6-639-270-000	510.90

Expense Approval Register

Packet: APPKT01541 - CHECK RUN/11/20/20

Vendor Name	Payable Number	Post Date	Description (Item)	Account Number	Amount
FISZBEIN INC	CC021201	11/17/2020	ACCT.#13234A	427-6-639-270-000	510.90
				Vendor FISZBEIN INC Total:	1,362.40
Vendor: HOLCOMB LAW OFFICE					
HOLCOMB LAW OFFICE	2929	11/01/2020	PROFESSIONAL SERVICES	401-6-611-260-000	610.03
				Vendor HOLCOMB LAW OFFICE Total:	610.03
Vendor: INK IMPRESSIONS INC					
INK IMPRESSIONS INC	58077	11/12/2020	ACCT.#CHA0202	631-8-872-231-000	1,755.00
				Vendor INK IMPRESSIONS INC Total:	1,755.00
Vendor: IUPA, CHAVES COUNTY SHERIFF'S ASSOC. #507					
IUPA, CHAVES COUNTY SHER	INV0005355	11/19/2020	James Dallas McDaniel Unio	401-2-200-010-000	25.00
IUPA, CHAVES COUNTY SHER	INV0005356	11/19/2020	Maria R. Cassidy Union Dues	401-2-200-010-000	25.00
IUPA, CHAVES COUNTY SHER	INV0005357	11/19/2020	Michael D. Shannon Union D	401-2-200-010-000	25.00
IUPA, CHAVES COUNTY SHER	INV0005358	11/19/2020	Andres G. Salas Union Dues	401-2-200-010-000	25.00
IUPA, CHAVES COUNTY SHER	INV0005359	11/19/2020	Amanda Beagles-Clark Union	401-2-200-010-000	25.00
IUPA, CHAVES COUNTY SHER	INV0005360	11/19/2020	Travis W. Hardy Union Dues	401-2-200-010-000	25.00
IUPA, CHAVES COUNTY SHER	INV0005361	11/19/2020	Pedro J. Silvas Union Dues	401-2-200-010-000	25.00
IUPA, CHAVES COUNTY SHER	INV0005362	11/19/2020	James Johnson Union Dues	401-2-200-010-000	25.00
IUPA, CHAVES COUNTY SHER	INV0005363	11/19/2020	Jeromy W. Parmer Union Du	401-2-200-010-000	25.00
IUPA, CHAVES COUNTY SHER	INV0005364	11/19/2020	Charles Drake Union Dues	401-2-200-010-000	25.00
IUPA, CHAVES COUNTY SHER	INV0005365	11/19/2020	Olivia Padilla Union Dues	401-2-200-010-000	25.00
IUPA, CHAVES COUNTY SHER	INV0005366	11/19/2020	David Whitzel Union Dues	401-2-200-010-000	25.00
IUPA, CHAVES COUNTY SHER	INV0005367	11/19/2020	Miguel Barrientos Union Due	401-2-200-010-000	25.00
IUPA, CHAVES COUNTY SHER	INV0005368	11/19/2020	GAUGE KENNARD	401-2-200-010-000	25.00
				Vendor IUPA, CHAVES COUNTY SHERIFF'S ASSOC. #507 Total:	350.00
Vendor: JOSHUA MARTINEZ					
JOSHUA MARTINEZ	CC021198	11/17/2020	LEA COUNTY/11/12/20	650-6-684-228-000	10.00
				Vendor JOSHUA MARTINEZ Total:	10.00
Vendor: MD SOLUTIONS INC					
MD SOLUTIONS INC	0041536	11/04/2020	ACCT.#CHAVES COUNTY	402-6-653-292-000	5,184.00
				Vendor MD SOLUTIONS INC Total:	5,184.00
Vendor: NEW MEXICO COUNTY INSURANCE AUTHORITY					
NEW MEXICO COUNTY INSU	ML001217	11/01/2020	ACCT.#3	401-6-619-314-000	7,931.56
				Vendor NEW MEXICO COUNTY INSURANCE AUTHORITY Total:	7,931.56
Vendor: NEW MEXICO GAS COMPANY INC					
NEW MEXICO GAS COMPAN	CC021316	11/12/2020	ACCT.#115435453-0797988-	401-6-699-341-000	39.88
NEW MEXICO GAS COMPAN	CC021317	11/09/2020	ACCT.#077227312-0796398-	408-8-812-341-000	110.21
NEW MEXICO GAS COMPAN	CC021318	11/13/2020	ACCT.#077702112-0801146-	402-6-651-341-000	594.13
NEW MEXICO GAS COMPAN	CC021319	11/13/2020	ACCT.#077726812-0801393-	412-8-815-341-000	99.62
NEW MEXICO GAS COMPAN	CC021320	11/12/2020	ACCT.#077991703-0797981-	401-6-691-341-000	51.29
NEW MEXICO GAS COMPAN	CC021321	11/12/2020	ACCT.#077991703-0797982-	401-6-691-341-000	72.38
NEW MEXICO GAS COMPAN	CC021321	11/12/2020	ACCT.#077991703-0797983-	401-6-691-341-000	57.00
NEW MEXICO GAS COMPAN	CC021322	11/12/2020	ACCT.#077991703-0804041-	401-6-691-341-000	32.40
NEW MEXICO GAS COMPAN	CC021323	11/12/2020	ACCT.#115435453-1203867-	401-6-612-341-000	2.30
NEW MEXICO GAS COMPAN	CC021323	11/12/2020	ACCT.#115435453-1203867-	401-6-613-341-000	1.53
NEW MEXICO GAS COMPAN	CC021323	11/12/2020	ACCT.#115435453-1203867-	401-6-616-341-000	1.53
NEW MEXICO GAS COMPAN	CC021323	11/12/2020	ACCT.#115435453-1203867-	401-6-621-341-000	1.53
NEW MEXICO GAS COMPAN	CC021323	11/12/2020	ACCT.#115435453-1203867-	401-6-621-341-000	2.28
NEW MEXICO GAS COMPAN	CC021323	11/12/2020	ACCT.#115435453-1203867-	401-6-622-341-000	5.79
NEW MEXICO GAS COMPAN	CC021323	11/12/2020	ACCT.#115435453-1203867-	401-6-624-341-000	7.00
NEW MEXICO GAS COMPAN	CC021323	11/12/2020	ACCT.#115435453-1203867-	401-6-625-341-000	1.53
NEW MEXICO GAS COMPAN	CC021323	11/12/2020	ACCT.#115435453-1203867-	401-6-631-341-000	3.16
NEW MEXICO GAS COMPAN	CC021323	11/12/2020	ACCT.#115435453-1203867-	401-6-632-341-000	2.04
NEW MEXICO GAS COMPAN	CC021323	11/12/2020	ACCT.#115435453-1203867-	401-7-721-341-000	21.68
NEW MEXICO GAS COMPAN	CC021323	11/12/2020	ACCT.#115435453-1203867-	401-7-731-341-000	12.86
NEW MEXICO GAS COMPAN	CC021323	11/12/2020	ACCT.#115435453-1203867-	401-7-741-341-000	9.31
NEW MEXICO GAS COMPAN	CC021323	11/12/2020	ACCT.#115435453-1203867-	401-7-751-341-000	29.61
NEW MEXICO GAS COMPAN	CC021323	11/12/2020	ACCT.#115435453-1203867-	427-6-638-341-000	3.14
				Vendor NEW MEXICO GAS COMPANY INC Total:	1,162.20

Vendor Name	Payable Number	Post Date	Description (Item)	Account Number	Amount
Vendor: NEW MEXICO STATE LIBRARY					
NEW MEXICO STATE LIBRARY	1-FY21	11/09/2020	ANNUAL ALLOCATION/FY 20-	401-6-671-436-000	525.00
Vendor NEW MEXICO STATE LIBRARY Total:					525.00
Vendor: NEW YORK LIFE INSURANCE					
NEW YORK LIFE INSURANCE	INV0005350	11/19/2020	NEW YORK LIFE	401-2-200-015-000	298.20
NEW YORK LIFE INSURANCE	INV0005350	11/19/2020	NEW YORK LIFE	402-2-200-015-000	180.00
NEW YORK LIFE INSURANCE	INV0005350	11/19/2020	NEW YORK LIFE	452-2-200-015-000	20.00
Vendor NEW YORK LIFE INSURANCE Total:					498.20
Vendor: NM RETIREE HEALTH CARE AUTHORITY					
NM RETIREE HEALTH CARE A	INV0005353	11/19/2020	NM RETIREE HEALTH CARE P	401-2-200-020-000	6,500.13
NM RETIREE HEALTH CARE A	INV0005353	11/19/2020	NM RETIREE HEALTH CARE P	402-2-200-020-000	1,835.52
NM RETIREE HEALTH CARE A	INV0005353	11/19/2020	NM RETIREE HEALTH CARE P	427-2-200-020-000	103.62
NM RETIREE HEALTH CARE A	INV0005353	11/19/2020	NM RETIREE HEALTH CARE P	432-2-200-020-000	105.68
NM RETIREE HEALTH CARE A	INV0005353	11/19/2020	NM RETIREE HEALTH CARE P	435-2-200-020-000	177.48
NM RETIREE HEALTH CARE A	INV0005353	11/19/2020	NM RETIREE HEALTH CARE P	437-2-200-020-000	57.89
NM RETIREE HEALTH CARE A	INV0005353	11/19/2020	NM RETIREE HEALTH CARE P	452-2-200-020-000	436.58
NM RETIREE HEALTH CARE A	INV0005354	11/19/2020	NM Retiree HealthCare Law	401-2-200-020-000	2,664.51
NM RETIREE HEALTH CARE A	INV0005378	11/19/2020	NM RETIREE HEALTH CARE P	402-2-200-020-000	6.29
Vendor NM RETIREE HEALTH CARE AUTHORITY Total:					11,887.70
Vendor: NORTHSTAR PLUMBING & HEATING					
NORTHSTAR PLUMBING & H	6274	11/03/2020	LABOR & MATERIAL	401-6-696-257-000	95.97
Vendor NORTHSTAR PLUMBING & HEATING Total:					95.97
Vendor: PRE-PAID LEGAL SERVICES INC					
PRE-PAID LEGAL SERVICES IN	INV0005334	11/19/2020	LEGAL SHIELD PAYABLE	401-2-200-022-000	184.35
PRE-PAID LEGAL SERVICES IN	INV0005334	11/19/2020	LEGAL SHIELD PAYABLE	402-2-200-022-000	144.50
Vendor PRE-PAID LEGAL SERVICES INC Total:					328.85
Vendor: SCHINDLER ELEVATOR CORP					
SCHINDLER ELEVATOR CORP	7153198982	11/01/2020	ACCT.#5000222100	401-6-692-257-000	1,578.46
Vendor SCHINDLER ELEVATOR CORP Total:					1,578.46
Vendor: SOUTHWESTERN PUBLIC SERVICE CO					
SOUTHWESTERN PUBLIC SER	CC021308	11/12/2020	ACCT.#54-1797003-1	401-6-691-243-000	99.21
SOUTHWESTERN PUBLIC SER	CC021309	11/13/2020	ACCT.#54-3949471-2	650-6-684-341-000	9,600.53
SOUTHWESTERN PUBLIC SER	CC021310	11/13/2020	ACCT.#54-3943798-4	401-6-691-243-000	55.56
SOUTHWESTERN PUBLIC SER	CC021311	11/12/2020	ACCT.#54-1632663-1	401-6-691-341-000	391.36
SOUTHWESTERN PUBLIC SER	CC021311	11/12/2020	ACCT.#54-1632663-1	401-6-691-341-000	24.68
SOUTHWESTERN PUBLIC SER	CC021311	11/12/2020	ACCT.#54-1632663-1	401-6-699-341-000	30.55
SOUTHWESTERN PUBLIC SER	CC021311	11/12/2020	ACCT.#54-1632663-1	401-6-699-341-000	46.50
SOUTHWESTERN PUBLIC SER	CC021311	11/12/2020	ACCT.#54-1632663-1	401-6-699-341-000	242.69
SOUTHWESTERN PUBLIC SER	CC021311	11/12/2020	ACCT.#54-1632663-1	401-6-699-341-000	128.36
SOUTHWESTERN PUBLIC SER	CC021311	11/12/2020	ACCT.#54-1632663-1	401-6-699-341-000	192.71
SOUTHWESTERN PUBLIC SER	CC021311	11/12/2020	ACCT.#54-1632663-1	437-6-659-341-000	34.94
SOUTHWESTERN PUBLIC SER	CC021312	11/12/2020	ACCT.#54-3943719-9	401-6-691-243-000	57.75
SOUTHWESTERN PUBLIC SER	CC021313	11/13/2020	ACCT.#54-3949421-2	412-8-815-341-000	109.46
SOUTHWESTERN PUBLIC SER	CC021314	11/13/2020	ACCT.#54-3949465-4	402-6-651-341-000	739.23
SOUTHWESTERN PUBLIC SER	CC021315	11/10/2020	ACCT.#54-7497040-6	408-8-812-341-000	101.92
SOUTHWESTERN PUBLIC SER	CC021315	11/10/2020	ACCT.#54-3943725-7	408-8-812-341-000	77.23
Vendor SOUTHWESTERN PUBLIC SERVICE CO Total:					11,932.68
Vendor: STANTEC CONSULTING SERVICES INC					
STANTEC CONSULTING SERVI	1723950	11/13/2020	ACCT.#147855	631-8-884-247-000	7,481.43
Vendor STANTEC CONSULTING SERVICES INC Total:					7,481.43
Vendor: STATE OF NEW MEXICO					
STATE OF NEW MEXICO	INV0005337	11/19/2020	000099447-COLLINS	402-2-200-018-000	180.89
STATE OF NEW MEXICO	INV0005338	11/19/2020	000285627-COLLINS	402-2-200-018-000	95.54
STATE OF NEW MEXICO	INV0005339	11/19/2020	000165474-COLLINS	402-2-200-018-000	25.38
STATE OF NEW MEXICO	INV0005340	11/19/2020	000454540-MENDOZA	401-2-200-018-000	132.92
STATE OF NEW MEXICO	INV0005343	11/19/2020	J.JOHNSON 000088516	401-2-200-018-000	449.54
STATE OF NEW MEXICO	INV0005344	11/19/2020	8954 MATTA	437-2-200-018-000	138.46

Expense Approval Register

Packet: APPKT01541 - CHECK RUN/11/20/20

Vendor Name	Payable Number	Post Date	Description (Item)	Account Number	Amount
STATE OF NEW MEXICO	INV0005346	11/19/2020	000386026	402-2-200-018-000	138.46
Vendor STATE OF NEW MEXICO Total:					1,161.19
Vendor: SUPREME MAINTENANCE					
SUPREME MAINTENANCE	34487	11/01/2020	ACCT.#2061	401-6-691-257-000	2,711.57
SUPREME MAINTENANCE	34488	11/01/2020	ACCT.#2062	401-6-696-257-000	472.69
SUPREME MAINTENANCE	34489	11/01/2020	ACCT. #2063	401-6-693-257-000	1,951.68
SUPREME MAINTENANCE	34490	11/01/2020	ACCT.#2064	401-6-691-267-000	237.78
SUPREME MAINTENANCE	34491	11/01/2020	ACCT.#2065	401-6-694-257-000	309.26
Vendor SUPREME MAINTENANCE Total:					5,682.98
Vendor: TEXAS CHILD SUPPORT SDU					
TEXAS CHILD SUPPORT SDU	INV0005341	11/19/2020	0013625446-COBOS	401-2-200-018-000	327.23
TEXAS CHILD SUPPORT SDU	INV0005345	11/19/2020	0009646845 MATTA,RAY	437-2-200-011-000	189.98
Vendor TEXAS CHILD SUPPORT SDU Total:					517.21
Vendor: TIMOTHY SALAZAR					
TIMOTHY SALAZAR	CE021306	11/18/2020	OSHA-ATP CLASS/10/26/20-1	401-6-614-225-000	427.50
Vendor TIMOTHY SALAZAR Total:					427.50
Vendor: UNITED WAY OF CHAVES COUNTY					
UNITED WAY OF CHAVES CO	INV0005333	11/19/2020	UNITED WAY PAYABLE	401-2-200-010-000	151.22
UNITED WAY OF CHAVES CO	INV0005333	11/19/2020	UNITED WAY PAYABLE	402-2-200-010-000	30.00
UNITED WAY OF CHAVES CO	INV0005333	11/19/2020	UNITED WAY PAYABLE	435-2-200-010-000	1.00
UNITED WAY OF CHAVES CO	INV0005333	11/19/2020	UNITED WAY PAYABLE	452-2-200-010-000	10.00
Vendor UNITED WAY OF CHAVES COUNTY Total:					192.22
Vendor: VISUAL EDGE, INC					
VISUAL EDGE, INC	28120963	11/03/2020	ACCT.#003-1579071-000	432-7-761-251-000	263.10
VISUAL EDGE, INC	28147745	11/06/2020	ACCT.#015-1458791-000	620-7-725-251-000	188.42
Vendor VISUAL EDGE, INC Total:					451.52
Vendor: WAC UPFITTERS, LLC					
WAC UPFITTERS, LLC	6472A	11/01/2020	LABOR & MATERIAL	631-8-884-372-000	54,988.38
Vendor WAC UPFITTERS, LLC Total:					54,988.38
Vendor: WATSON TRUCK & SUPPLY INC					
WATSON TRUCK & SUPPLY IN	335854DO	11/01/2020	ACCT.#336302	402-6-653-221-000	132.71
WATSON TRUCK & SUPPLY IN	335854DO	11/01/2020	CM335854DO/ACCT.#33630	402-6-653-221-000	-59.90
Vendor WATSON TRUCK & SUPPLY INC Total:					72.81
Vendor: Y-O BODY SHOP					
Y-O BODY SHOP	567	11/01/2020	LABOR & MATERIAL	402-6-653-221-000	884.12
Vendor Y-O BODY SHOP Total:					884.12
Grand Total:					211,044.94

Fund Summary

Fund	Expense Amount
401 - GENERAL FUND	43,503.96
402 - ROAD FUND	15,425.27
408 - EAST GRAND PLAINS VOLFIRE	289.36
412 - SIERRA VOLUNTEER FIRE FND	209.08
427 - INDIGENT HOSPITAL CLAIMS	1,557.16
432 - DWI GRANT FUNDS	368.78
435 - CORRECTION GRANTS	192.96
437 - ENVIRONMENTAL TAX	446.48
452 - FLOOD CONTROL	5,109.54
620 - CLERK RECORDING & FILING	188.42
631 - OTHER GRANTS & CONTRACTS	89,300.48
650 - DETENTION CONSTRUCTION PJ	54,453.45
Grand Total:	211,044.94

Account Summary

Account Number	Account Name	Expense Amount
401-2-200-010-000	UNITED WAY PAYABLE	501.22
401-2-200-015-000	NEW YORK LIFE INSURA	298.20
401-2-200-016-000	GLOBE LIFE PAYABLE	3,282.76
401-2-200-018-000	CHILD ENFORCEMENT P	1,159.69
401-2-200-020-000	RETIREE H/C PAYABLE	9,164.64
401-2-200-022-000	PRE-PAID LEGAL PAYABL	184.35
401-2-200-024-000	ALTONS POWER BLOCK	24.10
401-6-611-260-000	PROFESSIONAL SERVICE	610.03
401-6-612-341-000	UTILITIES	2.30
401-6-613-341-000	UTILITIES	1.53
401-6-614-225-000	PER DIEM EXPENSE	427.50
401-6-616-341-000	UTILITIES	1.53
401-6-619-314-000	PROPERTY INSURANCE	7,931.56
401-6-621-341-000	UTILITIES	3.81
401-6-622-341-000	UTILITIES	5.79
401-6-624-341-000	UTILITIES	7.00
401-6-625-341-000	UTILITIES	1.53
401-6-631-341-000	UTILITIES	3.16
401-6-632-341-000	UTILITIES	2.04
401-6-645-268-000	CARE OF PRISONER SER	5,850.00
401-6-671-436-000	NM STATE LIBRARY	525.00
401-6-691-104-000	TEMPORARY SALARIES	1,813.03
401-6-691-243-000	HIGHWAY LIGHTS	212.52
401-6-691-257-000	FACILITY MAINT/REPAIR	2,711.57
401-6-691-267-000	CONTRACTUAL SERVICES	237.78
401-6-691-341-000	UTILITIES	629.11
401-6-692-257-000	FACILITY MAINTENANCE	1,578.46
401-6-693-257-000	FACILITY MAINTENANCE	1,951.68
401-6-694-257-000	FACILITY MAINT/REPAIR	309.26
401-6-696-257-000	FACILITY MAINT/REPAIR	568.66
401-6-699-341-000	UTILITIES	680.69
401-7-721-341-000	UTILITIES	21.68
401-7-731-341-000	UTILITIES	12.86
401-7-741-341-000	UTILITIES	9.31
401-7-751-251-000	RENTALS	2,750.00
401-7-751-341-000	UTILITIES	29.61
402-2-200-010-000	UNITED WAY PAYABLE	30.00
402-2-200-015-000	NEW YORK LIFE INSURA	180.00
402-2-200-016-000	GLOBE LIFE PAYABLE	592.17
402-2-200-018-000	CHILD ENFORCEMENT P	440.27
402-2-200-020-000	RETIREE H/C PAYABLE	1,841.81
402-2-200-022-000	PRE-PAID LEGAL PAYABL	144.50
402-2-200-024-000	ALTONS POWER BLOCK	26.95

Account Summary

Account Number	Account Name	Expense Amount
402-6-651-341-000	UTILITIES	1,333.36
402-6-653-104-000	TEMPORARY SALARIES	902.56
402-6-653-221-000	VEH/HVY EQUIP. REPAIR	1,402.93
402-6-653-230-000	SUPPLIES/TOOLS	111.00
402-6-653-251-000	RENTALS	3,235.72
402-6-653-292-000	SIGNS & SIGN REPAIR	5,184.00
408-8-812-341-000	UTILITIES	289.36
412-8-815-341-000	UTILITIES	209.08
427-2-200-016-000	GLOBE LIFE PAYABLE	88.00
427-2-200-020-000	RETIREE H/C PAYABLE	103.62
427-6-638-341-000	UTILITIES	3.14
427-6-639-270-000	PAYMENT OF HOSPITAL	1,362.40
432-2-200-020-000	RETIREE H/C PAYABLE	105.68
432-7-761-251-000	RENTALS	263.10
435-2-200-010-000	UNITED WAY PAYABLE	1.00
435-2-200-016-000	GLOBE LIFE PAYABLE	14.48
435-2-200-020-000	RETIREE H/C PAYABLE	177.48
437-2-200-011-000	MISCELLANEOUS PAYABL	189.98
437-2-200-016-000	GLOBE LIFE PAYABLE	25.21
437-2-200-018-000	CHILD ENFORCEMENT P	138.46
437-2-200-020-000	RETIREE H/C PAYABLE	57.89
437-6-659-341-000	UTILITIES	34.94
452-2-200-010-000	UNITED WAY PAYABLE	10.00
452-2-200-015-000	NEW YORK LIFE INSURA	20.00
452-2-200-016-000	GLOBE LIFE PAYABLE	111.61
452-2-200-020-000	RETIREE H/C PAYABLE	436.58
452-8-832-223-000	VEHICLE FUELS	4,531.35
620-7-725-251-000	RENTALS	188.42
631-6-696-260-608	PROFESSIONAL SERVICE	25,075.67
631-8-872-231-000	NON-EXPENDABLE SUPP	1,755.00
631-8-884-247-000	CONSTRUCTION	7,481.43
631-8-884-372-000	VEHICLES - COUNTY	54,988.38
650-6-684-228-000	TRANSPORT PRISONERS	20.00
650-6-684-264-000	FEEDING OF PRISONERS	44,832.92
650-6-684-341-000	UTILITIES	9,600.53
	Grand Total:	211,044.94

Project Account Summary

Project Account Key	Expense Amount
None	211,044.94
Grand Total:	211,044.94

Approved For Payment

Fund Summary

Fund	Expense Amount
401 - GENERAL FUND	182,950.68
402 - ROAD FUND	64,296.45
408 - EAST GRAND PLAINS VOLFIRE	151.26
410 - MIDWAY VOLUNTEER FIRE FND	434.13
411 - BERRENDO VOLUNTEER FIRE	176.11
412 - SIERRA VOLUNTEER FIRE FND	16,751.86
414 - CC FIRE DIST #8 VOL FIRE	210.93
427 - INDIGENT HOSPITAL CLAIMS	2,073.67
431 - PUBLIC SAFETY GRANT	69.23
432 - DWI GRANT FUNDS	17,534.35
435 - CORRECTION GRANTS	4,680.36
437 - ENVIRONMENTAL TAX	588.27
452 - FLOOD CONTROL	16,209.46
631 - OTHER GRANTS & CONTRACTS	69,763.87
635 - EMERGENCY/CAPITAL OUTLAY	241,283.94
650 - DETENTION CONSTRUCTION PJ	9,898.81
670 - INTERNAL SERVICES	127.21
Grand Total:	627,200.59

Account Summary

Account Number	Account Name	Expense Amount
401-2-200-005-000	GROUP INSURANCE PAY	2,766.50
401-2-200-007-000	MEDICAL INSURANCE PA	158,714.07
401-2-200-010-000	UNITED WAY PAYABLE	368.77
401-2-200-018-000	CHILD ENFORCEMENT P	1,123.61
401-2-200-020-000	RETIREE H/C PAYABLE	9,234.10
401-2-200-021-000	VISION CARE PAYABLE	1,588.63
401-6-611-230-000	SUPPLIES/TOOLS	141.10
401-6-619-260-000	PROFESSIONAL SERVICE	3,000.00
401-6-619-339-000	POSTAGE/FREIGHT	4,040.00
401-6-645-268-000	CARE OF PRISONER SER	450.00
401-6-691-243-000	HIGHWAY LIGHTS	580.71
401-6-691-341-000	UTILITIES	39.41
401-6-693-341-000	UTILITIES	99.88
401-7-751-341-000	UTILITIES	27.99
401-7-752-223-000	VEHICLE FUELS	775.91
402-2-200-005-000	GROUP INSURANCE PAY	675.28
402-2-200-007-000	MEDICAL INSURANCE PA	39,544.55
402-2-200-018-000	CHILD ENFORCEMENT P	440.27
402-2-200-020-000	RETIREE H/C PAYABLE	1,821.93
402-2-200-021-000	VISION CARE PAYABLE	369.51
402-6-653-230-000	SUPPLIES/TOOLS	393.72
402-6-653-251-000	RENTALS	16,738.79
402-6-653-291-000	ROAD PROJECTS-OTHER	4,312.40
408-8-812-251-000	RENTALS	125.15
408-8-812-340-000	TELEPHONE	26.11
410-8-816-341-000	UTILITIES	434.13
411-8-814-341-000	UTILITIES	176.11
412-8-815-221-000	VEH/HVY EQUIP. REPAIR	16,158.65
412-8-815-227-000	TRANSPORTATION EXPE	238.76
412-8-815-267-000	CONTRACTUAL SERVICES	172.54
412-8-815-341-000	UTILITIES	181.91
414-8-819-227-000	TRANSPORTATION EXPE	81.03
414-8-819-341-000	UTILITIES	129.90
427-2-200-005-000	GROUP INSURANCE PAY	206.54
427-2-200-007-000	MEDICAL INSURANCE PA	1,746.20
427-2-200-020-000	RETIREE H/C PAYABLE	103.62
427-2-200-021-000	VISION CARE PAYABLE	17.31
431-2-200-010-000	UNITED WAY PAYABLE	6.23

Account Summary

Account Number	Account Name	Expense Amount
431-2-200-018-000	CHILD ENFORCEMENT P	36.08
431-2-200-020-000	RETIREE H/C PAYABLE	26.92
432-2-200-005-000	GROUP INSURANCE PAY	33.69
432-2-200-007-000	MEDICAL INS. PAYABLE	3,170.00
432-2-200-020-000	RETIREE H/C PAYABLE	105.68
432-2-200-021-000	VISION CARE PAYABLE	33.32
432-7-761-237-000	SUBSCRIPTIONS/PUBLIC	50.00
432-7-761-267-000	CONTRACTUAL SERVICES	6,766.66
432-7-762-267-000	CONTRACTUAL SERVICES	4,375.00
432-7-766-267-000	CONTRACTUAL SERVICES	3,000.00
435-2-200-005-000	GROUP INSURANCE PAY	71.77
435-2-200-007-000	MEDICAL INSURANCE PA	4,385.90
435-2-200-020-000	RETIREE H/C PAYABLE	175.57
435-2-200-021-000	VISION CARE PAYABLE	47.12
437-2-200-005-000	GROUP INSURANCE PAY	10.21
437-2-200-011-000	MISCELLANEOUS PAYABL	189.98
437-2-200-018-000	CHILD ENFORCEMENT P	138.46
437-2-200-020-000	RETIREE H/C PAYABLE	57.89
437-2-200-021-000	VISION CARE PAYABLE	13.15
437-6-659-341-000	UTILITIES	178.58
452-2-200-005-000	GROUP INSURANCE PAY	187.89
452-2-200-007-000	MEDICAL INSURANCE PA	9,948.95
452-2-200-020-000	RETIREE H/C PAYABLE	436.58
452-2-200-021-000	VISION CARE PAYABLE	89.87
452-8-832-223-000	VEHICLE FUELS	5,261.68
452-8-832-267-000	CONTRACTUAL SERVICES	162.39
452-8-832-341-000	UTILITIES	122.10
631-8-884-230-000	SUPPLIES	53,921.68
631-8-884-247-000	CONSTRUCTION	13,202.19
631-8-885-267-000	OTHER CONTRACT SERVI	2,640.00
635-6-671-409-000	CITY OF ROSWELL SPECI	122,235.96
635-6-682-371-000	EQUIPMENT/MACHINER	119,047.98
650-6-684-228-000	TRANSPORT PRISONERS	1,783.76
650-6-684-230-000	SUPPLIES/TOOLS	7,817.96
650-6-684-251-000	RENTALS	297.09
670-6-671-375-000	LEASE PURCHASE PAYME	127.21
	Grand Total:	627,200.59

Project Account Summary

Project Account Key	Expense Amount
None	627,200.59
Grand Total:	627,200.59

Approved For Payment




Chaves County, NM

Expense Approval Register

Packet: APPKT01523 - CHECK RUN/11/06/20

Vendor Name	Payable Number	Post Date	Description (Item)	Account Number	Amount
Vendor: CODE 3 SERVICE					
CODE 3 SERVICE	201040-2	11/01/2020	MULTICAST RADIO SYSTEM	631-8-884-230-000	26,960.84
CODE 3 SERVICE	201042-2	11/01/2020	COUNTY WIDE RADIO PROJE	635-6-682-371-000	59,523.99
				Vendor CODE 3 SERVICE Total:	86,484.83
				Grand Total:	86,484.83

Fund Summary

Fund	Expense Amount
631 - OTHER GRANTS & CONTRACTS	26,960.84
635 - EMERGENCY/CAPITAL OUTLAY	59,523.99
Grand Total:	86,484.83

Account Summary

Account Number	Account Name	Expense Amount
631-8-884-230-000	SUPPLIES	26,960.84
635-6-682-371-000	EQUIPMENT/MACHINER	59,523.99
Grand Total:		86,484.83

Project Account Summary

Project Account Key	Expense Amount
None	86,484.83
Grand Total:	86,484.83

Approved For Payment
[Handwritten Signature]



Expense Approval Register

Packet: APPKT01529 - CHECK RUN/11/13/20

Vendor Name	Payable Number	Post Date	Description (Item)	Account Number	Amount
Vendor: BELL GAS INC.					
BELL GAS INC.	25535	11/09/2020	ACCT.#10693	402-6-653-223-000	12,873.79
				Vendor BELL GAS INC. Total:	12,873.79
Vendor: BREWER OIL CO					
BREWER OIL CO	12274362	11/09/2020	ACCT.#12290075	402-6-653-230-000	200.59
				Vendor BREWER OIL CO Total:	200.59
Vendor: CHAVES COUNTY CASA					
CHAVES COUNTY CASA	FY 21-4 GS	11/10/2020	CONTINUUM GRANT/FY 20-2	631-8-885-267-000	1,320.00
CHAVES COUNTY CASA	FY 21-4 YA	11/10/2020	CONTINUUM GRANT/FY 20-2	631-8-885-267-000	1,315.00
				Vendor CHAVES COUNTY CASA Total:	2,635.00
Vendor: CITY OF ROSWELL					
CITY OF ROSWELL	CC021193	11/01/2020	ACCT.#44	437-6-659-242-000	13,272.67
				Vendor CITY OF ROSWELL Total:	13,272.67
Vendor: COOPERATIVE EDUCATIONAL SVCS.					
COOPERATIVE EDUCATIONAL	24-109287	11/10/2020	ACCT.#CHAVESCOUNTY	631-6-696-260-608	509.51
COOPERATIVE EDUCATIONAL	24-109293	11/10/2020	ACCT.#CHAVESCOUNTY	631-6-696-260-608	118.89
COOPERATIVE EDUCATIONAL	24-109336	11/11/2020	ACCT.#CHAVESCOUNTY	650-6-684-230-000	225.00
COOPERATIVE EDUCATIONAL	26-005507	11/05/2020	ACCT.#CHAVESCOUNTY	401-6-622-249-000	6,716.36
				Vendor COOPERATIVE EDUCATIONAL SVCS. Total:	7,569.76
Vendor: CURRY COUNTY ADMINISTRATION					
CURRY COUNTY ADMINISTRATION	CC021196	11/01/2020	BOOKING #20000001730	650-6-684-228-000	375.00
				Vendor CURRY COUNTY ADMINISTRATION Total:	375.00
Vendor: DEERE CREDIT INC					
DEERE CREDIT INC	2411298	11/01/2020	ACCT.#030-0061556-006	402-6-653-251-000	4,055.51
				Vendor DEERE CREDIT INC Total:	4,055.51
Vendor: DEERE CREDIT, INC					
DEERE CREDIT, INC	2412325	11/01/2020	ACCT.#030-0067387-000	402-6-653-251-000	3,060.45
				Vendor DEERE CREDIT, INC Total:	3,060.45
Vendor: DOMINION VOTING SYSTEM INC					
DOMINION VOTING SYSTEM	DVS137130	11/01/2020	ACCT.#USNMCHAVES	631-8-872-231-000	399.25
				Vendor DOMINION VOTING SYSTEM INC Total:	399.25
Vendor: FISZBEIN INC					
FISZBEIN INC	CC021170	11/10/2020	ACCT.#12925A	427-6-639-270-000	510.90
FISZBEIN INC	CC021171	11/10/2020	ACCT.#12926A	427-6-639-270-000	170.30
FISZBEIN INC	CC021172	11/10/2020	ACCT.#12926A	427-6-639-270-000	510.90
FISZBEIN INC	CC021177	11/03/2020	ACCT.#12603A	427-6-639-270-000	340.60
FISZBEIN INC	CC021178	11/03/2020	ACCT.#12603A	427-6-639-270-000	591.50
				Vendor FISZBEIN INC Total:	2,124.20
Vendor: GEORGIANA HUNT					
GEORGIANA HUNT	CC021176	11/12/2020	ICOUNT CENSUS GRANT SER	631-8-884-260-000	179.40
				Vendor GEORGIANA HUNT Total:	179.40
Vendor: HARMONIX TECHNOLOGIES INC					
HARMONIX TECHNOLOGIES I	20201201	11/01/2020	VMWARE SERVER	401-6-622-231-000	19,621.08
HARMONIX TECHNOLOGIES I	20201202	11/01/2020	ACCESS POINTS UPGRADES	401-6-622-231-000	7,733.85
				Vendor HARMONIX TECHNOLOGIES INC Total:	27,354.93
Vendor: KS STATE BANK					
KS STATE BANK	8-1	11/12/2020	ACCT.#3380675	635-6-682-375-000	13,634.11
				Vendor KS STATE BANK Total:	13,634.11

Expense Approval Register

Packet: APPKT01529 - CHECK RUN/11/13/20

Vendor Name	Payable Number	Post Date	Description (Item)	Account Number	Amount
Vendor: LOUIS JARAMILLO					
LOUIS JARAMILLO	CC021175	11/12/2020	ICOUNT CENSUS GRANT SER	631-8-884-260-000	1,323.08
Vendor LOUIS JARAMILLO Total:					1,323.08
Vendor: MADISON BLUE-EYES					
MADISON BLUE-EYES	CC021168	11/10/2020	YOUTH MEMBER	631-8-885-260-000	25.00
Vendor MADISON BLUE-EYES Total:					25.00
Vendor: NEW MEXICO GAS COMPANY INC					
NEW MEXICO GAS COMPAN	CC021188	11/03/2020	ACCT.#076424512-0788370-	401-6-645-341-000	99.47
NEW MEXICO GAS COMPAN	CC021188	11/03/2020	ACCT.#076424512-0788370-	401-6-692-341-000	508.31
NEW MEXICO GAS COMPAN	CC021188	11/03/2020	ACCT.#076424512-0788370-	401-6-692-341-000	44.90
NEW MEXICO GAS COMPAN	CC021189	11/05/2020	ACCT.#076846512-0792590-	411-8-814-341-000	79.07
NEW MEXICO GAS COMPAN	CC021190	11/06/2020	ACCT.#077058012-0794705-	410-8-816-341-000	100.92
NEW MEXICO GAS COMPAN	CC021191	11/06/2020	ACCT.#077227312-1237385-	408-8-812-341-000	71.54
NEW MEXICO GAS COMPAN	CC021192	11/05/2020	ACCT.#077937001-0803495-	411-8-814-341-000	39.51
Vendor NEW MEXICO GAS COMPANY INC Total:					943.72
Vendor: QWEST INC					
QWEST INC	CC021184	11/01/2020	ACCT.#N-575-624-0006-508	650-6-684-340-000	305.04
Vendor QWEST INC Total:					305.04
Vendor: ROSWELL CHAMBER OF COMMERCE					
ROSWELL CHAMBER OF CO	1222038	11/01/2020	ANNUAL ALLOCATION/FY 20-	401-6-672-426-000	4,791.67
Vendor ROSWELL CHAMBER OF COMMERCE Total:					4,791.67
Vendor: ROSWELL HOSPITAL CORPORATION					
ROSWELL HOSPITAL CORPORA	CC021179	11/03/2020	ACCT.#V022944821	427-6-639-270-000	341.95
ROSWELL HOSPITAL CORPORA	CC021180	11/03/2020	ACCT.#V022950935	427-6-639-270-000	31.77
ROSWELL HOSPITAL CORPORA	CC021181	11/03/2020	ACCT.#V022942031	427-6-639-270-000	192.62
ROSWELL HOSPITAL CORPORA	CC021182	11/03/2020	ACCT.#V022924146	427-6-639-270-000	31.77
ROSWELL HOSPITAL CORPORA	CC021183	11/03/2020	ACCT.#V022932479	427-6-639-270-000	31.77
Vendor ROSWELL HOSPITAL CORPORATION Total:					629.88
Vendor: SOUTHWESTERN PUBLIC SERVICE CO					
SOUTHWESTERN PUBLIC SER	CC021186	11/06/2020	ACCT.#54-3943824-7	401-6-612-341-000	83.24
SOUTHWESTERN PUBLIC SER	CC021186	11/06/2020	ACCT.#54-3943824-7	401-6-613-341-000	83.24
SOUTHWESTERN PUBLIC SER	CC021186	11/06/2020	ACCT.#54-3943824-7	401-6-616-341-000	83.24
SOUTHWESTERN PUBLIC SER	CC021186	11/06/2020	ACCT.#54-3943824-7	401-6-621-341-000	83.24
SOUTHWESTERN PUBLIC SER	CC021186	11/06/2020	ACCT.#54-3943824-7	401-6-621-341-000	166.47
SOUTHWESTERN PUBLIC SER	CC021186	11/06/2020	ACCT.#54-3943824-7	401-6-622-341-000	315.72
SOUTHWESTERN PUBLIC SER	CC021186	11/06/2020	ACCT.#54-3943824-7	401-6-624-341-000	381.74
SOUTHWESTERN PUBLIC SER	CC021186	11/06/2020	ACCT.#54-3943824-7	401-6-625-341-000	83.24
SOUTHWESTERN PUBLIC SER	CC021186	11/06/2020	ACCT.#54-3943824-7	401-6-631-341-000	172.21
SOUTHWESTERN PUBLIC SER	CC021186	11/06/2020	ACCT.#54-3943824-7	401-6-632-341-000	111.36
SOUTHWESTERN PUBLIC SER	CC021186	11/06/2020	ACCT.#54-3943824-7	401-7-721-341-000	1,181.95
SOUTHWESTERN PUBLIC SER	CC021186	11/06/2020	ACCT.#54-3943824-7	401-7-731-341-000	700.91
SOUTHWESTERN PUBLIC SER	CC021186	11/06/2020	ACCT.#54-3943824-7	401-7-741-341-000	507.45
SOUTHWESTERN PUBLIC SER	CC021186	11/06/2020	ACCT.#54-3943824-7	401-7-751-341-000	1,614.21
SOUTHWESTERN PUBLIC SER	CC021186	11/06/2020	ACCT.#54-3943824-7	427-6-638-341-000	172.20
SOUTHWESTERN PUBLIC SER	CC021187	11/05/2020	ACCT.#54-3949473-4	411-8-814-341-000	179.17
SOUTHWESTERN PUBLIC SER	CC021195	11/06/2020	ACCT.#54-3943804-3	401-6-693-341-000	1,435.73
Vendor SOUTHWESTERN PUBLIC SERVICE CO Total:					7,355.32
Vendor: THE MASTER'S TOUCH					
THE MASTER'S TOUCH	71039	11/01/2020	PRINTING OF TAX BILLS/2020	401-7-741-252-000	4,682.91
THE MASTER'S TOUCH	P71039	11/01/2020	POSTAGE TAX BILL MAILING/	401-7-741-339-000	526.42
Vendor THE MASTER'S TOUCH Total:					5,209.33
Vendor: THE ROSWELL REFUGE					
THE ROSWELL REFUGE	FY 21-4 RR	11/09/2020	LDWI DISTRIBUTION/FY 20-2	432-7-761-267-000	2,333.33
Vendor THE ROSWELL REFUGE Total:					2,333.33
Vendor: TOWN OF DEXTER					
TOWN OF DEXTER	116	11/10/2020	COLLABORATION FOR 2020 C	401-6-619-260-000	3,125.00
Vendor TOWN OF DEXTER Total:					3,125.00

Expense Approval Register

Packet: APPKT01529 - CHECK RUN/11/13/20

Vendor Name	Payable Number	Post Date	Description (Item)	Account Number	Amount
Vendor: TOWN OF HAGERMAN					
TOWN OF HAGERMAN	111020-2	11/10/2020	COLLABORATION OF 2020 CE	401-6-619-260-000	3,125.00
TOWN OF HAGERMAN	111020	11/10/2020	ANNUAL ALLOCATION/FY 20-	635-6-671-410-000	17,500.00
Vendor TOWN OF HAGERMAN Total:					20,625.00
Vendor: TOWN OF LAKE ARTHUR					
TOWN OF LAKE ARTHUR	CC021173	11/10/2020	COLLABORATION OF 2020 CE	401-6-619-260-000	3,125.00
Vendor TOWN OF LAKE ARTHUR Total:					3,125.00
Vendor: TYLER TECHNOLOGIES					
TYLER TECHNOLOGIES	025-312141	11/01/2020	ACCT.#CHAVESCOUNTY	401-6-631-249-000	5,114.33
Vendor TYLER TECHNOLOGIES Total:					5,114.33
Vendor: VISUAL EDGE, INC					
VISUAL EDGE, INC	28028225	11/01/2020	ACCT.#014-1392174-000	401-6-631-251-000	147.73
VISUAL EDGE, INC	28082950-1	11/01/2020	ACCT.#015-1458792-000	401-6-624-251-000	291.48
VISUAL EDGE, INC	28082950	11/01/2020	ACCT.#015-1458792-000	402-6-651-251-000	259.21
VISUAL EDGE, INC	28135856	11/05/2020	ACCT.#010-1534531-000	414-8-819-251-000	73.75
Vendor VISUAL EDGE, INC Total:					772.17
Grand Total:					143,412.53

Fund Summary

Fund	Expense Amount
401 - GENERAL FUND	66,657.46
402 - ROAD FUND	20,449.55
408 - EAST GRAND PLAINS VOLFIRE	71.54
410 - MIDWAY VOLUNTEER FIRE FND	100.92
411 - BERRENDO VOLUNTEER FIRE	297.75
414 - CC FIRE DIST #8 VOL FIRE	73.75
427 - INDIGENT HOSPITAL CLAIMS	2,926.28
432 - DWI GRANT FUNDS	2,333.33
437 - ENVIRONMENTAL TAX	13,272.67
631 - OTHER GRANTS & CONTRACTS	5,190.13
635 - EMERGENCY/CAPITAL OUTLAY	31,134.11
650 - DETENTION CONSTRUCTION PJ	905.04
Grand Total:	143,412.53

Account Summary

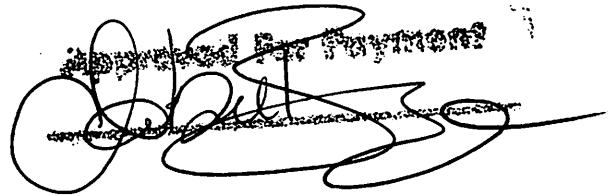
Account Number	Account Name	Expense Amount
401-6-612-341-000	UTILITIES	83.24
401-6-613-341-000	UTILITIES	83.24
401-6-616-341-000	UTILITIES	83.24
401-6-619-260-000	PROFESSIONAL SERVICE	9,375.00
401-6-621-341-000	UTILITIES	249.71
401-6-622-231-000	NON-EXPENDABLE SUPP	27,354.93
401-6-622-249-000	EQUIP MAINT/AGREEME	6,716.36
401-6-622-341-000	UTILITIES	315.72
401-6-624-251-000	RENTALS	291.48
401-6-624-341-000	UTILITIES	381.74
401-6-625-341-000	UTILITIES	83.24
401-6-631-249-000	EQUIP MAINT/AGREEME	5,114.33
401-6-631-251-000	RENTALS	147.73
401-6-631-341-000	UTILITIES	172.21
401-6-632-341-000	UTILITIES	111.36
401-6-645-341-000	UTILITIES	99.47
401-6-672-426-000	CHAMBER OF COMMER	4,791.67
401-6-692-341-000	UTILITIES	553.21
401-6-693-341-000	UTILITIES	1,435.73
401-7-721-341-000	UTILITIES	1,181.95
401-7-731-341-000	UTILITIES	700.91
401-7-741-252-000	PRINTING/PUBLISHING	4,682.91
401-7-741-339-000	POSTAGE/FREIGHT	526.42
401-7-741-341-000	UTILITIES	507.45
401-7-751-341-000	UTILITIES	1,614.21
402-6-651-251-000	RENTALS	259.21
402-6-653-223-000	VEHICLE FUELS	12,873.79
402-6-653-230-000	SUPPLIES/TOOLS	200.59
402-6-653-251-000	RENTALS	7,115.96
408-8-812-341-000	UTILITIES	71.54
410-8-816-341-000	UTILITIES	100.92
411-8-814-341-000	UTILITIES	297.75
414-8-819-251-000	RENTALS	73.75
427-6-638-341-000	UTILITIES	172.20
427-6-639-270-000	PAYMENT OF HOSPITAL	2,754.08
432-7-761-267-000	CONTRACTUAL SERVICES	2,333.33
437-6-659-242-000	LANDFILL EXPENSES	13,272.67
631-6-696-260-608	PROFESSIONAL SERVICE	628.40
631-8-872-231-000	NON-EXPENDABLE SUPP	399.25
631-8-884-260-000	PROFESSIONAL SERVICE	1,502.48
631-8-885-260-000	PROFESSIONAL SERVICE	25.00
631-8-885-267-000	OTHER CONTRACT SERVI	2,635.00
635-6-671-410-000	HAGERMAN PUBLIC SAF	17,500.00

Account Summary

Account Number	Account Name	Expense Amount
635-6-682-375-000	LEASE PURCHASES	13,634.11
650-6-684-228-000	TRANSPORT PRISONERS	375.00
650-6-684-230-000	SUPPLIES/TOOLS	225.00
650-6-684-340-000	TELEPHONE	305.04
	Grand Total:	143,412.53

Project Account Summary

Project Account Key	Expense Amount	
None	143,412.53	
	Grand Total:	143,412.53

A handwritten signature in black ink is written over a rectangular stamp. The stamp contains the text "Approved For Payment" in a bold, sans-serif font. The signature is a cursive-style name that is partially obscured by the stamp.



Chaves County, NM

Expense Approval Register

Packet: APPKT01531 - CHECK RUN/11/13/20

Vendor Name	Payable Number	Post Date	Description (Item)	Account Number	Amount
Vendor: DEERE CREDIT, INC DEERE CREDIT, INC	2412326	11/01/2020	ACCT.#030-0067399-00	402-6-653-251-000	3,060.45
				Vendor DEERE CREDIT, INC Total:	<u>3,060.45</u>
				Grand Total:	<u><u>3,060.45</u></u>

Fund Summary

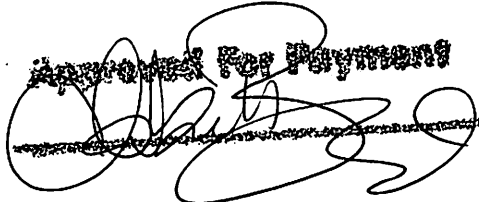
Fund	Expense Amount
402 - ROAD FUND	3,060.45
Grand Total:	3,060.45

Account Summary

Account Number	Account Name	Expense Amount
402-6-653-251-000	RENTALS	3,060.45
	Grand Total:	3,060.45

Project Account Summary

Project Account Key	Expense Amount
None	3,060.45
Grand Total:	3,060.45

~~Approved For Payment~~




Expense Approval Register

Packet: APPKT01535 - CHECK RUN/11/18/20

Vendor Name	Payable Number	Post Date	Description (Item)	Account Number	Amount
Vendor: AIMEE K. VRBA					
AIMEE K. VRBA	CC021208	11/06/2020	ELECTION JUDGE	401-7-722-104-000	185.00
AIMEE K. VRBA	CC021208	11/06/2020	TRAINING	401-7-722-104-000	20.00
Vendor AIMEE K. VRBA Total:					205.00
Vendor: ANGEL G. JUAREZ					
ANGEL G. JUAREZ	CC021211	11/06/2020	ELECTION CLERK	401-7-722-104-000	185.00
Vendor ANGEL G. JUAREZ Total:					185.00
Vendor: ANGELO GURULE					
ANGELO GURULE	CC021212	11/06/2020	PICKUP/DELIVERY	401-7-722-104-000	390.00
Vendor ANGELO GURULE Total:					390.00
Vendor: AUSTIN ELDRIDGE					
AUSTIN ELDRIDGE	CC021213	11/06/2020	ELECTION CLERK	401-7-722-104-000	185.00
Vendor AUSTIN ELDRIDGE Total:					185.00
Vendor: BELIA S. CHAPARRO					
BELIA S. CHAPARRO	CC021214	11/06/2020	ELECTION CLERK	401-7-722-104-000	185.00
BELIA S. CHAPARRO	CC021214	11/06/2020	TRAINING	401-7-722-104-000	20.00
Vendor BELIA S. CHAPARRO Total:					205.00
Vendor: BERNITA ADAMS					
BERNITA ADAMS	CC021215	11/06/2020	ELECTION JUDGE	401-7-722-104-000	185.00
Vendor BERNITA ADAMS Total:					185.00
Vendor: BETTY BECERRA					
BETTY BECERRA	CC021216	11/06/2020	ELECTION JUDGE	401-7-722-104-000	185.00
BETTY BECERRA	CC021216	11/06/2020	TRAINING	401-7-722-104-000	20.00
BETTY BECERRA	CC021216	11/06/2020	MILEAGE	401-7-722-104-000	20.70
Vendor BETTY BECERRA Total:					225.70
Vendor: BEVERLY WEST					
BEVERLY WEST	CC021217	11/06/2020	MILEAGE	401-7-722-104-000	20.70
BEVERLY WEST	CC021217	11/06/2020	TRAINING	401-7-722-104-000	20.00
BEVERLY WEST	CC021217	11/06/2020	PRESIDING JUDGE	401-7-722-104-000	200.00
Vendor BEVERLY WEST Total:					240.70
Vendor: BILL MASK					
BILL MASK	CC021218	11/06/2020	ELECTION CLERK/ABSENTEE	401-7-722-104-000	280.00
BILL MASK	CC021218	11/06/2020	TRAINING	401-7-722-104-000	20.00
Vendor BILL MASK Total:					300.00
Vendor: CARMEN P. CORDOVA					
CARMEN P. CORDOVA	CC021219	11/06/2020	ELECTION CLERK	401-7-722-104-000	185.00
CARMEN P. CORDOVA	CC021219	11/06/2020	TRAINING	401-7-722-104-000	20.00
Vendor CARMEN P. CORDOVA Total:					205.00
Vendor: CARRIE HOLLIFIELD					
CARRIE HOLLIFIELD	CC021220	11/06/2020	ELECTION JUDGE/ABSENTEE	401-7-722-104-000	300.00
CARRIE HOLLIFIELD	CC021220	11/06/2020	TRAINING	401-7-722-104-000	20.00
Vendor CARRIE HOLLIFIELD Total:					320.00
Vendor: CHARLES L. HARPER					
CHARLES L. HARPER	CC021221	11/06/2020	PRESIDING JUDGE	401-7-722-104-000	200.00
CHARLES L. HARPER	CC021221	11/06/2020	TRAINING	401-7-722-104-000	20.00
Vendor CHARLES L. HARPER Total:					220.00
Vendor: CHRIS A WILDERMUTH					
CHRIS A WILDERMUTH	CC021222	11/06/2020	ELECTION JUDGE	401-7-722-104-000	185.00
CHRIS A WILDERMUTH	CC021222	11/06/2020	TRAINING	401-7-722-104-000	20.00
Vendor CHRIS A WILDERMUTH Total:					205.00

Expense Approval Register

Packet: APPKT01535 - CHECK RUN/11/18/20

Vendor Name	Payable Number	Post Date	Description (Item)	Account Number	Amount
Vendor: COLTON ZUMALT					
COLTON ZUMALT	CC021223	11/06/2020	ELECTION CLERK	401-7-722-104-000	185.00
				Vendor COLTON ZUMALT Total:	185.00
Vendor: CONNIE FORD					
CONNIE FORD	CC021224	11/06/2020	PRESIDING JUDGE	401-7-722-104-000	200.00
				Vendor CONNIE FORD Total:	200.00
Vendor: DANIEL JOHNSON					
DANIEL JOHNSON	CC021226	11/06/2020	PRESIDING JUDGE	401-7-722-104-000	200.00
				Vendor DANIEL JOHNSON Total:	200.00
Vendor: DANIEL PRUITT					
DANIEL PRUITT	CC021225	11/06/2020	ELECTION JUDGE	401-7-722-104-000	185.00
				Vendor DANIEL PRUITT Total:	185.00
Vendor: DEBRA FREUND-SWAIN					
DEBRA FREUND-SWAIN	CC021227	11/06/2020	ELECTION CLERK	401-7-722-104-000	185.00
DEBRA FREUND-SWAIN	CC021227	11/06/2020	TRAINING	401-7-722-104-000	20.00
				Vendor DEBRA FREUND-SWAIN Total:	205.00
Vendor: DEVON KUNKO					
DEVON KUNKO	CC021228	11/06/2020	SET UP/PICK UP/MESSENGER	401-7-722-104-000	180.00
				Vendor DEVON KUNKO Total:	180.00
Vendor: DORA MARTINEZ					
DORA MARTINEZ	CC021229	11/06/2020	ELECTION CLERK	401-7-722-104-000	185.00
DORA MARTINEZ	CC021229	11/06/2020	TRAINING	401-7-722-104-000	20.00
				Vendor DORA MARTINEZ Total:	205.00
Vendor: ELIZABETH P. MONTOYA					
ELIZABETH P. MONTOYA	CC021230	11/06/2020	ELECTION CLERK	401-7-722-104-000	185.00
ELIZABETH P. MONTOYA	CC021230	11/06/2020	TRAINING	401-7-722-104-000	20.00
				Vendor ELIZABETH P. MONTOYA Total:	205.00
Vendor: ESPERANZA SANCHEZ					
ESPERANZA SANCHEZ	CC021231	11/06/2020	ELECTION CLERK	401-7-722-104-000	185.00
ESPERANZA SANCHEZ	CC021231	11/06/2020	TRAINING	401-7-722-104-000	20.00
				Vendor ESPERANZA SANCHEZ Total:	205.00
Vendor: EVA MCCOLLAUM					
EVA MCCOLLAUM	CC021232	11/06/2020	TRAINING	401-7-722-104-000	20.00
EVA MCCOLLAUM	CC021232	11/06/2020	ELECTION CLERK	401-7-722-104-000	185.00
				Vendor EVA MCCOLLAUM Total:	205.00
Vendor: FRANK R. RAMIREZ					
FRANK R. RAMIREZ	CC021233	11/06/2020	ELECTION CLERK	401-7-722-104-000	185.00
FRANK R. RAMIREZ	CC021233	11/06/2020	TRAINING	401-7-722-104-000	20.00
				Vendor FRANK R. RAMIREZ Total:	205.00
Vendor: FREDERICO R. RAMIREZ					
FREDERICO R. RAMIREZ	CC021234	11/06/2020	ELECTION JUDGE	401-7-722-104-000	185.00
FREDERICO R. RAMIREZ	CC021234	11/06/2020	TRAINING	401-7-722-104-000	20.00
				Vendor FREDERICO R. RAMIREZ Total:	205.00
Vendor: GEORGE BARI HARRIS					
GEORGE BARI HARRIS	CC021235	11/06/2020	ELECTION JUDGE	401-7-722-104-000	185.00
GEORGE BARI HARRIS	CC021235	11/06/2020	TRAINING	401-7-722-104-000	20.00
				Vendor GEORGE BARI HARRIS Total:	205.00
Vendor: GINA M. MONTES					
GINA M. MONTES	CC021236	11/06/2020	TRAINING	401-7-722-104-000	20.00
GINA M. MONTES	CC021236	11/06/2020	ELECTION CLERK	401-7-722-104-000	185.00
				Vendor GINA M. MONTES Total:	205.00
Vendor: GLORIA COX					
GLORIA COX	CC021237	11/06/2020	ELECTION CLERK	401-7-722-104-000	185.00
GLORIA COX	CC021237	11/06/2020	TRAINING	401-7-722-104-000	20.00
				Vendor GLORIA COX Total:	205.00

Expense Approval Register

Packet: APPKT01535 - CHECK RUN/11/18/20

Vendor Name	Payable Number	Post Date	Description (Item)	Account Number	Amount
Vendor: GRIFFEN KUNKO					
GRIFFEN KUNKO	CC021238	11/06/2020	SET UP/PICK UP/MESSENGER	401-7-722-104-000	225.00
Vendor GRIFFEN KUNKO Total:					225.00
Vendor: HONEY COVIN-WEEKS					
HONEY COVIN-WEEKS	CC021239	11/06/2020	ELECTION CLERK	401-7-722-104-000	185.00
HONEY COVIN-WEEKS	CC021239	11/06/2020	TRAINING	401-7-722-104-000	20.00
HONEY COVIN-WEEKS	CC021239	11/06/2020	MILEAGE	401-7-722-104-000	20.70
Vendor HONEY COVIN-WEEKS Total:					225.70
Vendor: INEATHA H. GAY					
INEATHA H. GAY	CC021240	11/06/2020	ELECTION JUDGE	401-7-722-104-000	185.00
INEATHA H. GAY	CC021240	11/06/2020	TRAINING	401-7-722-104-000	20.00
Vendor INEATHA H. GAY Total:					205.00
Vendor: JACOB RENE LUNA HERRERA					
JACOB RENE LUNA HERRERA	CC021241	11/06/2020	ELECTION JUDGE	401-7-722-104-000	185.00
JACOB RENE LUNA HERRERA	CC021241	11/06/2020	TRAINING	401-7-722-104-000	20.00
JACOB RENE LUNA HERRERA	CC021241	11/06/2020	MILEAGE	401-7-722-104-000	28.80
Vendor JACOB RENE LUNA HERRERA Total:					233.80
Vendor: JAMES A DOCKTER					
JAMES A DOCKTER	CC021242	11/06/2020	PRESIDING JUDGE	401-7-722-104-000	200.00
JAMES A DOCKTER	CC021242	11/06/2020	TRAINING	401-7-722-104-000	20.00
Vendor JAMES A DOCKTER Total:					220.00
Vendor: JANNA L. SMITH					
JANNA L. SMITH	CC021243	11/06/2020	ELECTION CLERK	401-7-722-104-000	185.00
Vendor JANNA L. SMITH Total:					185.00
Vendor: JASON PERRY					
JASON PERRY	CC021248	11/06/2020	PRESIDING JUDGE	401-7-722-104-000	200.00
Vendor JASON PERRY Total:					200.00
Vendor: JEAN STEVENSON					
JEAN STEVENSON	CC021259	11/06/2020	ELECTION JUDGE	401-7-722-104-000	185.00
JEAN STEVENSON	CC021259	11/06/2020	TRAINING	401-7-722-104-000	20.00
Vendor JEAN STEVENSON Total:					205.00
Vendor: JENNIFER GRIEGO					
JENNIFER GRIEGO	CC021251	11/06/2020	ELECTION JUDGE	401-7-722-104-000	185.00
Vendor JENNIFER GRIEGO Total:					185.00
Vendor: JESSICA ELDRIDGE					
JESSICA ELDRIDGE	CC021252	11/06/2020	ELECTION CLERK	401-7-722-104-000	185.00
Vendor JESSICA ELDRIDGE Total:					185.00
Vendor: JESSICA ESPINOZA					
JESSICA ESPINOZA	CC021253	11/06/2020	ELECTION CLERK	401-7-722-104-000	185.00
Vendor JESSICA ESPINOZA Total:					185.00
Vendor: JIM T FIELDING					
JIM T FIELDING	CC021254	11/06/2020	TRAINING	401-7-722-104-000	20.00
JIM T FIELDING	CC021254	11/06/2020	ELECTION JUDGE	401-7-722-104-000	185.00
Vendor JIM T FIELDING Total:					205.00
Vendor: JODELL DAVIS					
JODELL DAVIS	CC021255	11/06/2020	ELECTION CLERK/ABSENTEE	401-7-722-104-000	280.00
JODELL DAVIS	CC021255	11/06/2020	TRAINING	401-7-722-104-000	20.00
Vendor JODELL DAVIS Total:					300.00
Vendor: JOE M. PONCE					
JOE M. PONCE	CC021256	11/06/2020	ELECTION JUDGE	401-7-722-104-000	185.00
Vendor JOE M. PONCE Total:					185.00
Vendor: JUANITA K KIRKPATRICK					
JUANITA K KIRKPATRICK	CC021257	11/06/2020	ELECTION JUDGE	401-7-722-104-000	185.00
JUANITA K KIRKPATRICK	CC021257	11/06/2020	TRAINING	401-7-722-104-000	20.00
Vendor JUANITA K KIRKPATRICK Total:					205.00

Expense Approval Register

Packet: APPKT01535 - CHECK RUN/11/18/20

Vendor Name	Payable Number	Post Date	Description (Item)	Account Number	Amount
Vendor: JUDY HOBSON					
JUDY HOBSON	CC021258	11/06/2020	PRESIDING JUDGE	401-7-722-104-000	200.00
JUDY HOBSON	CC021258	11/06/2020	TRAINING	401-7-722-104-000	20.00
Vendor JUDY HOBSON Total:					220.00
Vendor: JULIA ESPINOZA					
JULIA ESPINOZA	CC021259	11/06/2020	ELECTION JUDGE	401-7-722-104-000	185.00
Vendor JULIA ESPINOZA Total:					185.00
Vendor: JULIE RACKLER					
JULIE RACKLER	CC021260	11/06/2020	ELECTION CLERK	401-7-722-104-000	185.00
JULIE RACKLER	CC021260	11/06/2020	TRAINING	401-7-722-104-000	20.00
Vendor JULIE RACKLER Total:					205.00
Vendor: KATHERINE MALLION					
KATHERINE MALLION	CC021261	11/06/2020	TRAINING	401-7-722-104-000	20.00
KATHERINE MALLION	CC021261	11/06/2020	ELECTION CLERK	401-7-722-104-000	185.00
Vendor KATHERINE MALLION Total:					205.00
Vendor: KATIE JOHNSON					
KATIE JOHNSON	CC021262	11/06/2020	ELECTION JUDGE	401-7-722-104-000	185.00
Vendor KATIE JOHNSON Total:					185.00
Vendor: KELLY STOKER					
KELLY STOKER	CC021263	11/06/2020	ELECTION CLERK	401-7-722-104-000	185.00
KELLY STOKER	CC021263	11/06/2020	TRAINING	401-7-722-104-000	20.00
Vendor KELLY STOKER Total:					205.00
Vendor: KEVIN BUSSELL					
KEVIN BUSSELL	CC021264	11/06/2020	PRESIDING JUDGE	401-7-722-104-000	200.00
Vendor KEVIN BUSSELL Total:					200.00
Vendor: LADONNA WILLOUGHBY					
LADONNA WILLOUGHBY	CC021265	11/06/2020	ELECTION CLERK	401-7-722-104-000	185.00
LADONNA WILLOUGHBY	CC021265	11/06/2020	TRAINING	401-7-722-104-000	20.00
Vendor LADONNA WILLOUGHBY Total:					205.00
Vendor: LILLY M. CHAVEZ					
LILLY M. CHAVEZ	CC021266	11/06/2020	ELECTION JUDGE	401-7-722-104-000	185.00
LILLY M. CHAVEZ	CC021266	11/06/2020	TRAINING	401-7-722-104-000	20.00
Vendor LILLY M. CHAVEZ Total:					205.00
Vendor: LINDSAY HARRELL					
LINDSAY HARRELL	CC021267	11/06/2020	OPENING/CLOSING	401-7-722-104-000	50.00
Vendor LINDSAY HARRELL Total:					50.00
Vendor: LISA K. ELDRIDGE					
LISA K. ELDRIDGE	CC021268	11/06/2020	ELECTION CLERK	401-7-722-104-000	185.00
Vendor LISA K. ELDRIDGE Total:					185.00
Vendor: LOIS WILSON STEPHENS					
LOIS WILSON STEPHENS	CC021269	11/06/2020	MILEAGE	401-7-722-104-000	20.70
LOIS WILSON STEPHENS	CC021269	11/06/2020	TRAINING	401-7-722-104-000	20.00
LOIS WILSON STEPHENS	CC021269	11/06/2020	ELECTION JUDGE	401-7-722-104-000	185.00
Vendor LOIS WILSON STEPHENS Total:					225.70
Vendor: LORETTA M. LARA					
LORETTA M. LARA	CC021270	11/06/2020	TRAINING	401-7-722-104-000	20.00
LORETTA M. LARA	CC021270	11/06/2020	ELECTION CLERK/ABSENTEE	401-7-722-104-000	280.00
Vendor LORETTA M. LARA Total:					300.00
Vendor: LUPE M PONCE					
LUPE M PONCE	CC021271	11/06/2020	TRAINING	401-7-722-104-000	20.00
LUPE M PONCE	CC021271	11/06/2020	ELECTION CLERK	401-7-722-104-000	280.00
Vendor LUPE M PONCE Total:					300.00
Vendor: MAIDA ARCHIBEQUE					
MAIDA ARCHIBEQUE	CC021273	11/06/2020	ELECTION CLERK	401-7-722-104-000	185.00

Expense Approval Register

Packet: APPKT01535 - CHECK RUN/11/18/20

Vendor Name	Payable Number	Post Date	Description (Item)	Account Number	Amount
MAIDA ARCHIBEQUE	CC021273	11/06/2020	TRAINING	401-7-722-104-000	20.00
Vendor MAIDA ARCHIBEQUE Total:					205.00
Vendor: MARCOS NAVA					
MARCOS NAVA	CC021274	11/06/2020	TRAINING	401-7-722-104-000	20.00
MARCOS NAVA	CC021274	11/06/2020	ELECTION CLERK	401-7-722-104-000	185.00
Vendor MARCOS NAVA Total:					205.00
Vendor: MARGARET BADILLO					
MARGARET BADILLO	CC021275	11/06/2020	ELECTION JUDGE	401-7-722-104-000	185.00
Vendor MARGARET BADILLO Total:					185.00
Vendor: MARGARITA L. HERRERA					
MARGARITA L. HERRERA	CC021272	11/06/2020	PRESIDING JUDGE	401-7-722-104-000	200.00
MARGARITA L. HERRERA	CC021272	11/06/2020	TRAINING	401-7-722-104-000	20.00
MARGARITA L. HERRERA	CC021272	11/06/2020	MILEAGE	401-7-722-104-000	28.80
Vendor MARGARITA L. HERRERA Total:					248.80
Vendor: MARIO BADILLO JR					
MARIO BADILLO JR	CC021276	11/06/2020	ELECTION CLERK	401-7-722-104-000	185.00
Vendor MARIO BADILLO JR Total:					185.00
Vendor: MARSHA KIRKHAM					
MARSHA KIRKHAM	CC021277	11/06/2020	ELECTION CLERK/ABSENTEE	401-7-722-104-000	280.00
MARSHA KIRKHAM	CC021277	11/06/2020	TRAINING	401-7-722-104-000	20.00
Vendor MARSHA KIRKHAM Total:					300.00
Vendor: MARY B. ANDAZOLA					
MARY B. ANDAZOLA	CC021278	11/06/2020	ELECTION CLERK	401-7-722-104-000	185.00
MARY B. ANDAZOLA	CC021278	11/06/2020	TRAINING	401-7-722-104-000	20.00
Vendor MARY B. ANDAZOLA Total:					205.00
Vendor: MARY JEAN FOWLER					
MARY JEAN FOWLER	CC021279	11/06/2020	ELECTION JUDGE	401-7-722-104-000	185.00
Vendor MARY JEAN FOWLER Total:					185.00
Vendor: MELINDA BACA					
MELINDA BACA	CC021280	11/06/2020	ELECTION JUDGE	401-7-722-104-000	185.00
MELINDA BACA	CC021280	11/06/2020	TRAINING	401-7-722-104-000	20.00
Vendor MELINDA BACA Total:					205.00
Vendor: MICHAEL SUDDUTH					
MICHAEL SUDDUTH	CC021281	11/06/2020	ELECTION CLERK	401-7-722-104-000	185.00
MICHAEL SUDDUTH	CC021281	11/06/2020	TRAINING	401-7-722-104-000	20.00
Vendor MICHAEL SUDDUTH Total:					205.00
Vendor: NADINE M. PITTMAN					
NADINE M. PITTMAN	CC021282	11/06/2020	ELECTION CLERK	401-7-722-104-000	185.00
Vendor NADINE M. PITTMAN Total:					185.00
Vendor: PABLO MARTINEZ					
PABLO MARTINEZ	CC021283	11/06/2020	PRESIDING JUDGE	401-7-722-104-000	200.00
PABLO MARTINEZ	CC021283	11/06/2020	TRAINING	401-7-722-104-000	20.00
Vendor PABLO MARTINEZ Total:					220.00
Vendor: PAULA MCCLAIN-SILVA					
PAULA MCCLAIN-SILVA	CC021284	11/06/2020	TRAINING	401-7-722-104-000	20.00
PAULA MCCLAIN-SILVA	CC021284	11/06/2020	ELECTION JUDGE/ABSENTEE	401-7-722-104-000	300.00
Vendor PAULA MCCLAIN-SILVA Total:					320.00
Vendor: PHYLLIS G FIX					
PHYLLIS G FIX	CC021285	11/06/2020	ELECTION CLERK/ABSENTEE	401-7-722-104-000	280.00
PHYLLIS G FIX	CC021285	11/06/2020	TRAINING	401-7-722-104-000	20.00
Vendor PHYLLIS G FIX Total:					300.00
Vendor: REBECCA FRANCO					
REBECCA FRANCO	CC021286	11/06/2020	ELECTION JUDGE	401-7-722-104-000	185.00
Vendor REBECCA FRANCO Total:					185.00

Expense Approval Register

Packet: APPKT01535 - CHECK RUN/11/18/20

Vendor Name	Payable Number	Post Date	Description (Item)	Account Number	Amount
Vendor: REY, ANDREW REY, ANDREW	CC021210	11/06/2020	ELECTION CLERK	401-7-722-104-000	185.00
				Vendor REY, ANDREW Total:	185.00
Vendor: RICHARD ROBERTSON RICHARD ROBERTSON	CC021287	11/06/2020	ELECTION CLERK	401-7-722-104-000	185.00
RICHARD ROBERTSON	CC021287	11/06/2020	TRAINING	401-7-722-104-000	20.00
				Vendor RICHARD ROBERTSON Total:	205.00
Vendor: RILEY ROBERTSON RILEY ROBERTSON	CC021288	11/06/2020	ELECTION CLERK	401-7-722-104-000	185.00
				Vendor RILEY ROBERTSON Total:	185.00
Vendor: RITA KANE-DOERHOEFER RITA KANE-DOERHOEFER	CC021290	11/06/2020	PRESIDING JUDGE	401-7-722-104-000	200.00
RITA KANE-DOERHOEFER	CC021290	11/06/2020	TRAINING	401-7-722-104-000	20.00
				Vendor RITA KANE-DOERHOEFER Total:	220.00
Vendor: RITA LARA RITA LARA	CC021289	11/06/2020	ELECTION CLERK	401-7-722-104-000	185.00
RITA LARA	CC021289	11/06/2020	TRAINING	401-7-722-104-000	20.00
				Vendor RITA LARA Total:	205.00
Vendor: RITA S. THOMAS RITA S. THOMAS	CC021291	11/06/2020	ELECTION CLERK	401-7-722-104-000	185.00
				Vendor RITA S. THOMAS Total:	185.00
Vendor: ROBBIE HIGGINS ROBBIE HIGGINS	CC021292	11/06/2020	PRESIDING JUDGE/ABSENTE	401-7-722-104-000	320.00
ROBBIE HIGGINS	CC021292	11/06/2020	TRAINING	401-7-722-104-000	20.00
				Vendor ROBBIE HIGGINS Total:	340.00
Vendor: ROBERT VILLA ROBERT VILLA	CC021293	11/06/2020	ELECTION CLERK	401-7-722-104-000	185.00
				Vendor ROBERT VILLA Total:	185.00
Vendor: ROSIE FRANCO ROSIE FRANCO	CC021294	11/06/2020	ELECTION CLERK	401-7-722-104-000	185.00
				Vendor ROSIE FRANCO Total:	185.00
Vendor: ROSS T. ROBERTSON ROSS T. ROBERTSON	CC021295	11/06/2020	ELECTION CLERK	401-7-722-104-000	185.00
				Vendor ROSS T. ROBERTSON Total:	185.00
Vendor: SALVADOR LOZOYA SALVADOR LOZOYA	CC021296	11/06/2020	ELECTION CLERK	401-7-722-104-000	185.00
				Vendor SALVADOR LOZOYA Total:	185.00
Vendor: SARA HALL SARA HALL	CC021297	11/06/2020	ELECTION CLERK/ABSENTEE	401-7-722-104-000	280.00
SARA HALL	CC021297	11/06/2020	TRAINING	401-7-722-104-000	20.00
				Vendor SARA HALL Total:	300.00
Vendor: SCOTT USHER SCOTT USHER	CC021298	11/06/2020	ELECTION CLERK	401-7-722-104-000	185.00
				Vendor SCOTT USHER Total:	185.00
Vendor: SHEILA SMITH SHEILA SMITH	CC021299	11/06/2020	ELECTION CLERK	401-7-722-104-000	280.00
SHEILA SMITH	CC021299	11/06/2020	TRAINING	401-7-722-104-000	20.00
				Vendor SHEILA SMITH Total:	300.00
Vendor: STEVE SORENSEN STEVE SORENSEN	CC021300	11/06/2020	PICKUP/DELIVERY	401-7-722-104-000	320.00
				Vendor STEVE SORENSEN Total:	320.00
Vendor: TERRESA RAMIREZ TERRESA RAMIREZ	CC021301	11/06/2020	ELECTION CLERK	401-7-722-104-000	185.00
TERRESA RAMIREZ	CC021301	11/06/2020	TRAINING	401-7-722-104-000	20.00
				Vendor TERRESA RAMIREZ Total:	205.00

Expense Approval Register

Packet: APPKT01535 - CHECK RUN/11/18/20

Vendor Name	Payable Number	Post Date	Description (Item)	Account Number	Amount
Vendor: TRUCILLA (TRUDY) EVANS					
TRUCILLA (TRUDY) EVANS	CC021302	11/06/2020	ELECTION JUDGE	401-7-722-104-000	185.00
Vendor TRUCILLA (TRUDY) EVANS Total:					185.00
Vendor: VANESSA BUSSELL					
VANESSA BUSSELL	CC021303	11/06/2020	PRESIDING JUDGE	401-7-722-104-000	200.00
Vendor VANESSA BUSSELL Total:					200.00
Vendor: VERNON D. DYER					
VERNON D. DYER	CC021304	11/06/2020	ELECTION CLERK	401-7-722-104-000	185.00
VERNON D. DYER	CC021304	11/06/2020	TRAINING	401-7-722-104-000	20.00
Vendor VERNON D. DYER Total:					205.00
Vendor: WAYNE E. KASUBOSKI					
WAYNE E. KASUBOSKI	CC021305	11/06/2020	TRAINING	401-7-722-104-000	20.00
WAYNE E. KASUBOSKI	CC021305	11/06/2020	PRESIDING JUDGE/ABSENTE	401-7-722-104-000	320.00
Vendor WAYNE E. KASUBOSKI Total:					340.00
Grand Total:					19,940.40

Fund Summary

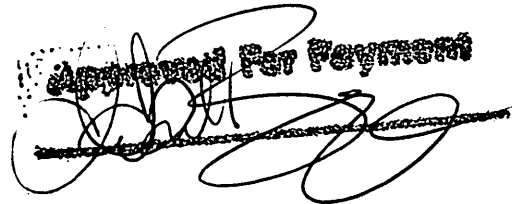
Fund	Expense Amount
401 - GENERAL FUND	<u>19,940.40</u>
Grand Total:	19,940.40

Account Summary

Account Number	Account Name	Expense Amount
401-7-722-104-000	TEMPORARY SALARIES	<u>19,940.40</u>
	Grand Total:	19,940.40

Project Account Summary

Project Account Key	Expense Amount
None	<u>19,940.40</u>
Grand Total:	19,940.40

Approved For Payment




Chaves County, NM

Expense Approval Register

Packet: APPKT01538 - CHECK RUN/11/19/20

Vendor Name	Payable Number	Post Date	Description (Item)	Account Number	Amount
Vendor: JOHNNY ORTIZ JOHNNY ORTIZ	CC021307	11/19/2020	CLAIM SETTLEMENT	650-6-684-319-000	2,500.00
				Vendor JOHNNY ORTIZ Total:	<u>2,500.00</u>
				Grand Total:	<u>2,500.00</u>

Fund Summary

Fund	Expense Amount
650 - DETENTION CONSTRUCTION PJ	2,500.00
Grand Total:	2,500.00

Account Summary

Account Number	Account Name	Expense Amount
650-6-684-319-000	OTHER INSURANCE	2,500.00
	Grand Total:	2,500.00

Project Account Summary

Project Account Key	Expense Amount
None	2,500.00
Grand Total:	2,500.00

A handwritten signature in blue ink is written over a rectangular stamp. The signature is cursive and appears to be 'D. [unclear]'. The stamp is mostly illegible due to the signature and some noise in the image.



Expense Approval Register

Packet: APPKT01545 - CHECK RUN/11/25/20

Vendor Name	Payable Number	Post Date	Description (Item)	Account Number	Amount	
Vendor: CORRHEALTH						
CORRHEALTH	10329	11/01/2020	MEDICAL CARE OF INMATES	427-6-639-268-000	151,653.28	
					Vendor CORRHEALTH Total:	151,653.28
Vendor: DONA ANA COUNTY						
DONA ANA COUNTY	S0087377	11/20/2020	HOUSING OF JUVENILES	401-6-645-268-000	12,580.00	
					Vendor DONA ANA COUNTY Total:	12,580.00
Vendor: F&H INVESTMENTS, LLC						
F&H INVESTMENTS, LLC	CC021342	11/24/2020	LEASE/110 E. MESCALERO	635-6-682-375-000	11,500.00	
					Vendor F&H INVESTMENTS, LLC Total:	11,500.00
Vendor: NEW MEXICO GAS COMPANY INC						
NEW MEXICO GAS COMPAN	CC021336	11/13/2020	ACCT.#078156501-0805690-	650-6-684-341-000	1,425.07	
NEW MEXICO GAS COMPAN	CC021337	11/12/2020	ACCT.#115435453-1201470-	401-6-612-341-000	15.22	
NEW MEXICO GAS COMPAN	CC021337	11/12/2020	ACCT.#115435453-1201470-	401-6-613-341-000	10.12	
NEW MEXICO GAS COMPAN	CC021337	11/12/2020	ACCT.#115435453-1201470-	401-6-616-341-000	10.12	
NEW MEXICO GAS COMPAN	CC021337	11/12/2020	ACCT.#115435453-1201470-	401-6-621-341-000	15.15	
NEW MEXICO GAS COMPAN	CC021337	11/12/2020	ACCT.#115435453-1201470-	401-6-621-341-000	10.12	
NEW MEXICO GAS COMPAN	CC021337	11/12/2020	ACCT.#115435453-1201470-	401-6-622-341-000	38.39	
NEW MEXICO GAS COMPAN	CC021337	11/12/2020	ACCT.#115435453-1201470-	401-6-624-341-000	46.42	
NEW MEXICO GAS COMPAN	CC021337	11/12/2020	ACCT.#115435453-1201470-	401-6-625-341-000	10.12	
NEW MEXICO GAS COMPAN	CC021337	11/12/2020	ACCT.#115435453-1201470-	401-6-631-341-000	20.94	
NEW MEXICO GAS COMPAN	CC021337	11/12/2020	ACCT.#115435453-1201470-	401-6-632-341-000	13.54	
NEW MEXICO GAS COMPAN	CC021337	11/12/2020	ACCT.#115435453-1201470-	401-7-721-341-000	143.73	
NEW MEXICO GAS COMPAN	CC021337	11/12/2020	ACCT.#115435453-1201470-	401-7-731-341-000	85.23	
NEW MEXICO GAS COMPAN	CC021337	11/12/2020	ACCT.#115435453-1201470-	401-7-741-341-000	61.71	
NEW MEXICO GAS COMPAN	CC021337	11/12/2020	ACCT.#115435453-1201470-	401-7-751-341-000	196.29	
NEW MEXICO GAS COMPAN	CC021337	11/12/2020	ACCT.#115435453-1201470-	427-6-638-341-000	20.94	
					Vendor NEW MEXICO GAS COMPANY INC Total:	2,123.11
Vendor: QUADIENT FINANCE USA, INC						
QUADIENT FINANCE USA, IN	11685567-1	11/18/2020	ACCT.#7900011001689986	401-6-619-339-000	2,020.00	
					Vendor QUADIENT FINANCE USA, INC Total:	2,020.00
Vendor: QWEST INC						
QWEST INC	CC021324	11/13/2020	ACCT.#575-347-2145-084B	410-8-816-340-000	60.93	
					Vendor QWEST INC Total:	60.93
Vendor: SOUTHWESTERN PUBLIC SERVICE CO						
SOUTHWESTERN PUBLIC SER	CC021325	11/20/2020	ACCT.#54-0013077300-0	401-6-619-341-000	29.49	
SOUTHWESTERN PUBLIC SER	CC021326	11/19/2020	ACCT.#54-0012497212-2	452-8-832-341-000	131.67	
SOUTHWESTERN PUBLIC SER	CC021329	11/19/2020	ACCT.#54-3943782-6	412-8-815-341-000	56.26	
SOUTHWESTERN PUBLIC SER	CC021329	11/19/2020	ACCT.#54-3943785-9	412-8-815-341-000	44.53	
SOUTHWESTERN PUBLIC SER	CC021330	11/16/2020	ACCT.#54-3943772-4	401-6-691-243-000	38.07	
SOUTHWESTERN PUBLIC SER	CC021331	11/18/2020	ACCT.#54-0010784288-9	412-8-815-341-000	105.17	
SOUTHWESTERN PUBLIC SER	CC021332	11/16/2020	ACCT.#54-1485939-1	401-6-693-341-000	34.82	
SOUTHWESTERN PUBLIC SER	CC021333	11/16/2020	ACCT.#54-3943703-1	401-6-691-243-000	34.09	
SOUTHWESTERN PUBLIC SER	CC021334	11/16/2020	ACCT.#54-3943686-9	401-6-691-243-000	38.37	
SOUTHWESTERN PUBLIC SER	CC021335	11/18/2020	ACCT.#54-8936266-1	412-8-815-341-000	117.09	
SOUTHWESTERN PUBLIC SER	CC021338	11/20/2020	ACCT.#54-3949442-7	401-6-645-341-000	887.04	
SOUTHWESTERN PUBLIC SER	CC021338	11/20/2020	ACCT.#54-3949442-7	401-6-692-341-000	4,533.01	
SOUTHWESTERN PUBLIC SER	CC021338	11/20/2020	ACCT.#54-3949442-7	401-6-692-341-000	400.45	
SOUTHWESTERN PUBLIC SER	CC021341	11/16/2020	ACCT.#54-3943737-1	401-6-691-243-000	43.27	
					Vendor SOUTHWESTERN PUBLIC SERVICE CO Total:	6,493.33

Expense Approval Register

Packet: APPKT01545 - CHECK RUN/11/25/20

Vendor Name	Payable Number	Post Date	Description (Item)	Account Number	Amount
Vendor: ZOLL MEDICAL CORP					
ZOLL MEDICAL CORP	3169591	11/02/2020	ACCT.#126975	411-8-814-231-000	4,843.62
Vendor ZOLL MEDICAL CORP Total:					<u>4,843.62</u>
Grand Total:					<u><u>191,274.27</u></u>

Fund Summary


Fund	Expense Amount
401 - GENERAL FUND	21,315.71
410 - MIDWAY VOLUNTEER FIRE FND	60.93
411 - BERRENDO VOLUNTEER FIRE	4,843.62
412 - SIERRA VOLUNTEER FIRE FND	323.05
427 - INDIGENT HOSPITAL CLAIMS	151,674.22
452 - FLOOD CONTROL	131.67
635 - EMERGENCY/CAPITAL OUTLAY	11,500.00
650 - DETENTION CONSTRUCTION PJ	1,425.07
Grand Total:	191,274.27

Account Summary

Account Number	Account Name	Expense Amount
401-6-612-341-000	UTILITIES	15.22
401-6-613-341-000	UTILITIES	10.12
401-6-616-341-000	UTILITIES	10.12
401-6-619-339-000	POSTAGE/FREIGHT	2,020.00
401-6-619-341-000	UTILITIES	29.49
401-6-621-341-000	UTILITIES	25.27
401-6-622-341-000	UTILITIES	38.39
401-6-624-341-000	UTILITIES	46.42
401-6-625-341-000	UTILITIES	10.12
401-6-631-341-000	UTILITIES	20.94
401-6-632-341-000	UTILITIES	13.54
401-6-645-268-000	CARE OF PRISONER SER	12,580.00
401-6-645-341-000	UTILITIES	887.04
401-6-691-243-000	HIGHWAY LIGHTS	153.80
401-6-692-341-000	UTILITIES	4,933.46
401-6-693-341-000	UTILITIES	34.82
401-7-721-341-000	UTILITIES	143.73
401-7-731-341-000	UTILITIES	85.23
401-7-741-341-000	UTILITIES	61.71
401-7-751-341-000	UTILITIES	196.29
410-8-816-340-000	TELEPHONE	60.93
411-8-814-231-000	NON-EXPENDABLE SUPP	4,843.62
412-8-815-341-000	UTILITIES	323.05
427-6-638-341-000	UTILITIES	20.94
427-6-639-268-000	CARE OF PRISONER SER	151,653.28
452-8-832-341-000	UTILITIES	131.67
635-6-682-375-000	LEASE PURCHASES	11,500.00
650-6-684-341-000	UTILITIES	1,425.07
Grand Total:		191,274.27

Project Account Summary

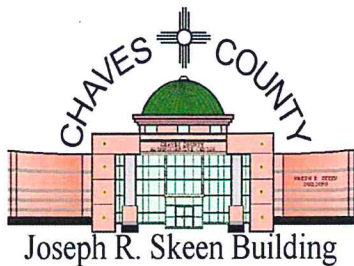
Project Account Key	Expense Amount
None	191,274.27
Grand Total:	191,274.27



 Approved for Payment

Chaves County Clerk's Office

Dave Kunko
 #1 St. Mary's Place
 PO Box 580
 Roswell, NM 88203
 Phone: 575-624-6614
 Fax: 575-624-6523
 Email: coclerk@co.chaves.nm.us



COMMISSIONERS

- Dara Dana • District 1
- T Calder Ezzell Jr • District 2
- Jeff Bilberry • District 3
- Robert B. Corn • District 4
- William E. Cavin • District 5

Summary Report

11/01/2020-11/30/2020

CLERK FEES (EQUIPMENT)	\$ 4,900.00
GEN CLERK'S FEES	\$ 15,264.96
LIQUOR LICENSE	\$ -
CHILDREN'S TRUST FUND	\$ 345.00
PROBATE	\$ 521.85
PHOTOCOPIES.....	\$ 1,511.25
GOVT GROSS RECEIPTS TAX	\$ 258.39
TOTAL AMOUNT:	<u>\$22,801.45</u>
TOTAL DOCUMENTS FILED	779
NEW MARRIAGE LICENSES	23
NEW PROBATES	14
NEW SURVEYS	4
NEW PLATS	3
VOTER CHANGES	316
NEW REGISTRANTS	178
REPUBLICANS	17691
DEMOCRATS	9679
LIBERTARIANS	298
OTHER	7597

November 2020 P-Card Report

Account	Department	Item Total
401-2-200 Total	Benefit Source (Payroll)	\$9,478.80
401-6-611 Total	Commissioners	\$322.70
401-6-612 Total	County Manager	\$227.88
401-6-613 Total	Human Resources	\$1,769.81
401-6-614 Total	Safety	\$2,198.04
401-6-616 Total	Fire & Emergency Services	\$194.16
401-6-619 Total	Working Capital	\$156.90
401-6-621 Total	Public Works	\$463.20
401-6-622 Total	Information Technology	\$9,041.72
401-6-624 Total	Planning & Zoning	\$2,333.11
401-6-625 Total	Purchasing	\$166.11
401-6-631 Total	Finance Dept	\$415.09
401-6-632 Total	Community Development	\$166.20
401-6-641 Total	Detention Administration	\$212.41
401-6-642 Total	Adult Detention	\$410.54
401-6-645 Total	Juvenile CCJD	\$158.70
401-6-691 Total	Facility Maintenance	\$4,080.86
401-6-692 Total	Courthouse Maintenance	\$644.52
401-6-693 Total	Facility Maintenance. Health Dept.	\$759.24
401-6-694 Total	Facility Maintenance. CC Road Dept.	\$268.97
401-6-696 Total	Operating Exp - CCDC	\$1,236.62
401-6-699 Total	St. Mary Complex	\$61.60
401-7-721 Total	Clerk Admin	\$2,037.96
401-7-722 Total	Clerk Bureau Elec.	\$1,788.13
401-7-731 Total	Assessor Admin	\$1,472.09
401-7-732 Total	Assessor Appraisal	\$8.63
401-7-741 Total	Treasurer Dept.	\$522.62
401-7-751 Total	Sheriff Admin	\$17,462.15
401-7-752 Total	Sheriff Patrol & Investigation	\$3,699.51
402-6-651 Total	Road Admin	\$2,359.93
402-6-652 Total	Road Shop	\$733.05
402-6-653 Total	Road Construction & Maintenance	\$23,661.32
407-8-811 Total	Dunken FD	\$387.55
408-8-812 Total	East Grand Plains FD	\$674.92
409-8-813 Total	Penasco FD	\$1,021.49
410-8-816 Total	Midway FD	\$952.42
411-8-814 Total	Berrendo FD	\$2,460.03
411-8-820 Total	Berrendo FD	\$4,766.31
411-8-828 Total	Berrendo FD	\$249.98
412-8-815 Total	Sierra FD	\$4,496.45
413-8-818 Total	Rio Felix FD	\$376.70

414-8-819 Total	Fire District #8	\$1,458.44
427-6-638 Total	Indigent	\$380.67
430-7-753 Total	Law Enforcement	\$4,639.98
432-7-761 Total	DWI	\$773.14
435-6-643 Total	Court Services	\$23.80
452-8-832 Total	Flood Dept.	\$7,891.01
628-7-733 Total	Assessor	\$17.00
631-6-696 Total	Other Grant's & Contracts	\$11,995.20
631-8-872 Total	Other Grant's & Contracts	\$3,399.24
631-8-884 Total	Other Grant's & Contracts	\$685.17
631-8-886 Total	Other Grant's & Contracts	\$60.25
631-8-889 Total	Other Grant's & Contracts	\$22,683.89
635-6-682 Total	Emergency & Capital Outlay	\$11.99
650-6-684 Total	CCDC Construction Fund	\$5,511.16
670-6-671 Total	Internal Services	\$6,610.61
Grand Total		\$170,039.97

Sheriff's Office
CHAVES COUNTY

#1 Saint Mary's Place
P.O. Box 1396
Roswell, New Mexico 88203
(575) 624-6500

Mike Herrington, Sheriff

Sheriff's Monthly Statistics Report
November 2020

Commission Meeting: December 17, 2020

Total Number of Arrests: 52
Adult: 51
Juvenile: 1

Total Number of DWI's: 7

Total Number of Arrest Citations: 1
Adult: 0
Juvenile: 1

Total Number of Non-Traffic Citations: 2
Total Number of Traffic Citations: 76

Total Number of Accident Reports: 22

CCSO Mileage Report
NOVEMBER 2020

Unit #	Year	Make	Model	Assigned to	Mileage Beg.	Mileage End	Total
900	2013	Ford	Taurus	Spare	154,300	155,116	816
901	2016	Ford	F-250 Crew Cab	Spare	133,561	133,561	0
902	2009	Ford	F-150	Spare	195,314	195,314	0
903	2014	Ford	F-150	Serna, Jimmy	100,729	102,089	1360
905	2017	Ford	F-150	Hohle, Doug	67,310	68,192	882
907	2011	Ford	F-250 Crew Cab	Spare	230,916	230,916	0
908	2013	Ford	Taurus	Martinez, Joshua	151,105	151,191	86
909	2019	Ford	F-150	Hite, Laura	25,805	26,980	1175
910	2014	Ford	F-150 4x4	Spare	100,580	100,580	0
911	2016	Ford	Expedition 4x4	Spare	104,200	104,200	0
913	2016	Ford	Expedition 4x4	Spare	72,055	72,055	0
914	2018	Ford	Taurus	Kennard, Gauge	54,173	55,623	1450
915	2008	Dodge	Charger	Hardy, Travis	100,055	100,335	280
916	2018	Ford	Explorer	Beagles-Clar, Amanda	48,958	51,676	2718
917	2018	Ford	Explorer	Spare	61,780	61,780	0
918	2006	Ford	Van	Transport	121,384	121,396	12
919	2009	Ford	Crown Victoria	Spare	128,383	128,383	0
920	2008	Ford	Crown Victoria	CID Spare Broken Odometer	91,880	91,880	0
922	2018	Ford	Explorer	Spare K-9	32,448	32,448	0
923	2005	Ford	F-150	CID Spare	116,700	116,700	0
924	2008	Ford	Crown Victoria	Spare	128,335	128,335	0
925	2018	Ford	Explorer	Wrecked	58,652	58,652	0
928	2010	Dodge	Van	Transport	158,802	158,814	12
929	2013	Ford	Explorer	Sanchez, Jacob	73,276	73,654	378
930	2014	Ford	Taurus	Perez, Agustin	54,852	55,093	241
931	2008	Ford	Crown Victoria	Spare	122,139	122,139	0
933	2017	Ford	Explorer	De La Cerda, Nathaniel	57,961	60,933	2972
934	2017	Ford	Explorer	Conklin, Benjamin	105,984	109,563	3579
935	2017	Ford	Explorer	Wrecked	86,301	86,301	0
937	2015	Chevy	Caprice	Spare	98,286	98,286	0
939	2015	Chevy	Caprice	Spare	95,457	95,457	0
940	2010	Ford	F-150	Serrano, Agustin	158,710	159,723	1013
941	2014	Ford	Taurus	Spare	112,912	114,598	1686
942	2008	Chevy	Caprice	Spare	115,638	115,840	202
943	2014	Ford	Taurus	Romero, Anna	102,950	103,151	201
944	2014	Ford	Taurus	Spare	109,239	109,239	0
945	2014	Ford	Taurus	Delgado, Ricardo	130,537	131,820	1283
946	2014	Ford	Taurus	Cody Smothermon	129383	129397	14
947	2013	Chevy	Tahoe	Mason, James	65,365	66,234	869
948	2011	Ford	Crown Victoria	Spare	126,760	126,820	60
951	2010	Ford	Crown Victoria	McDaniel, Dallas	97,704	97,829	125
952	2010	Ford	Expedition	Spare	140,599	140,599	0
953	2010	Ford	Expedition	Wrecked	128,040	128,040	0
955	2013	Ford	Focus	CID Spare-Civilian	96,058	96,058	0
956	2014	Ford	Taurus	Padilla, Olivia	123,210	123,428	218
957	2014	Ford	Taurus	Avila, Ignacio	134,518	134,689	171
960	2007	Ford	Crown Victoria	Spare	117,120	117,120	0
961	2018	Ford	Van	Transport	19,041	19,517	476
962	2015	Dodge	Caravan	Transport	126,294	128,860	2566
966	2020	Ford	F-150	Ray, Mike	688	1,014	326
967	2019	Ford	F-150	Drake, Charles	364	1,956	1,592
968	2019	Ford	F-150	Herrington, Mike	353	442	89
969	2019	Ford	F-150	Yslas, Charles	1,532	2,794	1,262
970	2019	Ford	F-150	Ramirez, Joel	1,035	2,065	1,030
971	2019	Ford	F-150	Shannon, Mike	501	1,060	559

977	2019	Ford	F-150	Silvas, Pedro	31,090	32,384	1294
978	2019	Ford	F-150	Ramos, Raul	17,590	18,094	504
979	2020	Ford	F-150	Barrientos, Miguel	7,714	9,925	2,211
980	2020	Ford	F-150	Parmer, Jeremy	6,012	7,281	1269
981	2020	Ford	F-150	Hendrix, Scott	9,815	13,520	3705
982	2020	Ford	F-150	Whitzel, David	5,720	7,458	1,738
983	2020	Ford	F-150	Salas, Andres	6,429	8,623	2,194
989	2011	Chevy	Tahoe	Sedillo, Tony	110,639	112,273	1,634
994	2020	Ford	F-150	Nava, Isaac	5,012	5,642	630
995	2020	Ford	F-150	Cassidy, Maria	3,208	5,505	2,297
996	2020	Ford	F-150	Cobos, Isaac	3,970	6,291	2,321
997	2020	Ford	F-150	Johnson, James	5,486	8,247	2,761
998	2007	Ford	Fusion	Bell, Sarah	26,224	26,289	65
999		Ford	F-550 Diesel	Crime Scene Truck	214,787	214,787	0
						TOTAL:	52325.9

****Spare maybe in use due to Assigned Units in the Shop for repairs**